

K1 高速直驱电脑平缝机系列

HIGH SPEED DIRECT-DRIVE COMPUTERIZED LOCKSTITCH SEWING MACHINE SERIES

使用说明 · 零件手册

INSTRUCTIONS MANUAL & PARTS BOOK

开车前的注意事项 / BEFORE OPERATION

1. 油盘内未加油绝不能开车。
2. 机器运转时，从上轮外侧转向应为逆时针方向，注意，不能倒转。
3. 确认电动机标牌上标电压及相位是否正确。

1. Never operate the machine unless its oil pan has been filled with oil.
2. After setting up the machine, check the direction of motor rotation. To check it, turn the handwheel by hand to bring the needle down, and turn the power switch ON while observing the handwheel. (The handwheel should turn counterclockwise as observed from the handwheel side.)
3. Confirm that the voltage and phase (single or 3-phase) are correct by checking them against the ratings shown on the motor nameplate.

使用注意事项 / OPERATION PRECAUTIONS

1. 接通电源开关或机器运转时，请勿将手放到针的下部。
2. 机器运转时，请勿将手指伸入压线杆护罩内。
3. 机头翻动时，一定要切断电源开关。
4. 操作者离开机器时，必须切断电源。
5. 机器运转期间，注意不允许任何人的头或手以及任何东西靠近绕线轮和电动机。
6. 装卸防护罩、或者其它保护装置时，请勿开动机器。
7. 不要用自来水等油漆稀释剂清洗机头表面。

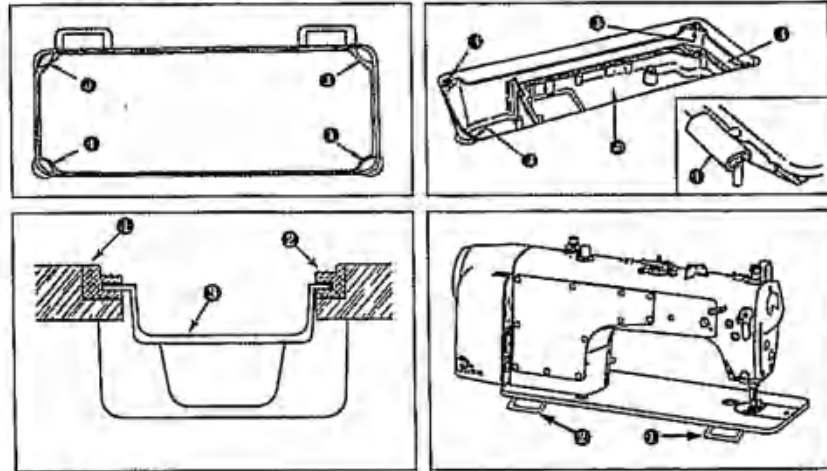
1. Keep your hands away from the needle when you turn the power switch ON or while the machine is operating.
2. Do not put your fingers into the thread take-up cover while the machine is operating.
3. Be sure to turn the power switch OFF before tilting the machine head or removing the V belt.
4. When an operator leaves from the machine, make sure to turn off the power.
5. During operation, be careful not to allow your or any other person's head or hands to come close to the handwheel, V belt, bobbin winder or motor. Also, do not place anything close to them. Doing so may be dangerous.
6. If your machine is provided with a belt cover, finger guard or any other protectors, do not operate your machine with any of them removed.
7. Don't clean the face of machine head with thinner.

1. 规格 / SPECIFICATIONS

用途	一般布料、薄料、中厚料	中厚料、厚料
缝纫速度	最高4,000rpm	最高3,500rpm
最大针脚长度	5mm	
机针	DBx1 #9-#18 (#14)	DBx1 #20-#23 (#21)
压脚高度(脚踏提升)	9mm(标准) 13mm(最大)	9mm(标准) 13mm(最大)
使用机油	New Defrix Oil No.1 机油	

Application	General fabrics, light-weight and medium-weight materials	Medium-weight materials, Heavy-weight materials
Sewing speed	Max. 4,000 rpm	Max. 3,500 rpm
Max. Stitch length	5mm	
Needle	DBx1 #9-#18 (#14)	DBx1 #20-#23 (#21)
Presser foot lift	9mm (standard) 13mm (Max.)	9mm (standard) 13mm (Max.)
Lubricating oil	New Defrix Oil No.1	
Noise	Workplace-related noise at sewing speed N=4,000 min ⁻¹ : L _{WA} < 83 dB(A) Noise measurement according to DIN 45635-49-A-1	

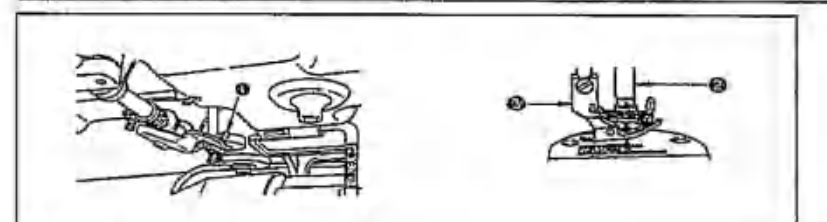
2. 缝纫机的安装 / INSTALLATION



- (1) 底座的安装**
- 1) 把底座支到机台的四角上。
 - 2) 把前侧的2个头部橡胶支座 ① 放到机台的伸出部，把2个头部橡胶垫圈 ② 固定，然后把底脚 ③ 放上去。
- (1) Installing the under cover**
- 1) The oil pan should rest on the four corners of the machine table groove.
 - 2) Fix two rubber seats ① on side ② (operator's side) using nails ③ as illustrated above. Fix two seats ④ on side ⑤ (hinged side) using a rubber-based adhesive. Then place oil pan ⑥ on the fix.

3. 膝动提升高度的调整 / ADJUSTING THE HEIGHT OF THE KNEE LIFTER

注意： 为了防止意外启动造成的事故，请关掉电源后进行。
WARNING: Turn OFF the power before starting the work so as to prevent accidents caused by abrupt start of the sewing machine.



- 1) 膝动提升的压脚标准高度为10mm。
 - 2) 调节脚踏提升调节螺丝 ① 可以把压脚高度最大调整到13mm。(A型时最大为9mm)
 - 3) 压脚提升到10mm以上时，请注意机针 ② 的前端下降到最低点时，不能碰到压脚 ③。
- 1) The standard height of the presser foot lifted using the knee lifter is 10mm.
 - 2) You can adjust the presser foot lift up to 13mm using knee lifter adjust screw ① (Max.9mm for A type)
 - 3) When you have adjusted the presser foot lift to over 10mm, be sure that the bottom end of needle bar ② in its lowest position does not hit presser foot ③.

4. 加油 / LUBRICATION

注意： 为了防止意外启动造成的事故，请关掉电源后进行。
WARNING: Turn OFF the power before starting the work so as to prevent accidents caused by abrupt start of the sewing machine.



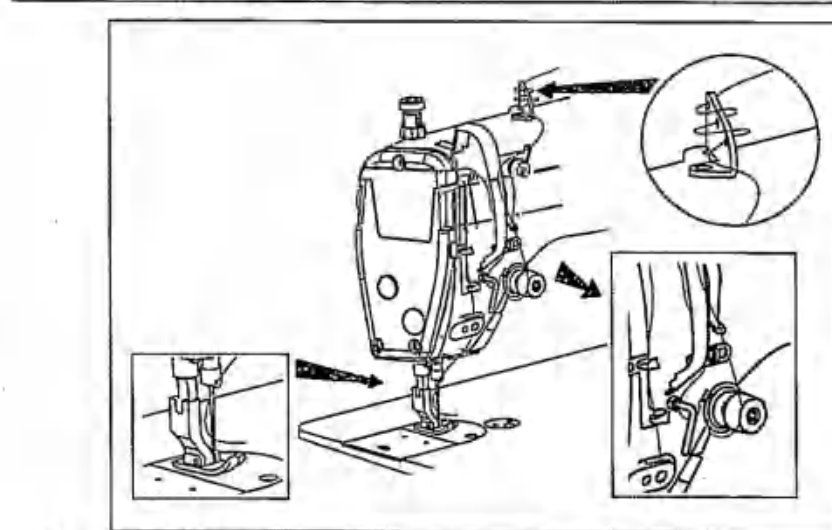
- 运转缝纫机前**
- 1) 请把 New Defrix No.1 机油倒进油槽 ① 里，一直加到 HIGH 标记 ② 的位置。
 - 2) 油槽的油面降到 LOW 标记 ③ 以下时，请再次补充机油。
 - 3) 加油后运转缝纫机，如果倒转正常，可以进过油窗 ④ 看到油的流动。
 - 4) 油流动量的多少，与油量的多少无关。

- 新缝纫机或较长时间没有使用的缝纫机在使用之前，应进行10分钟2500~3000rpm的磨合运转。**
- When you first operate your machine after setup or after an extended period of disuse, run your machine at 2,500 to 3,000 rpm. for about 10 minutes for the purpose of break-in.
- Information on lubrication**
- 1) Fill oil pan ① with NEW Defrix Oil No.1 up to HIGH mark ②.
 - 2) When the oil level lowers below LOW mark ③, refill the oil pan with the specified oil.
 - 3) When you operate the machine after lubrication, you will see splashing oil through oil sight window ④ if the lubrication is adequate.

4) Note that the amount of the splashing oil is related to the amount of the lubricating oil.

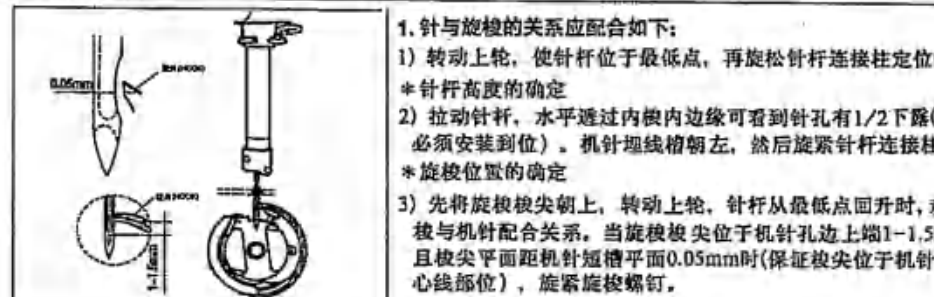
5. 上线的穿线方法 / THREADING THE MACHINE HEAD

注意： 为了防止意外启动造成的事故，请关掉电源后进行。
WARNING: Turn OFF the power before starting the work so as to prevent accidents caused by abrupt start of the sewing machine.



6. 机针与旋梭的关系 / NEEDLE-TO-HOOK RELATIONSHIP

注意： 为了防止意外启动造成的事故，请关掉电源后进行。
WARNING: Turn OFF the power before starting the work so as to prevent accidents caused by abrupt start of the sewing machine.



注意： 若间隙太小，会磨损梭尖，若间隙太大，则会引起跳针。旋梭原来用什么型号，调整后，也请使用原来的型号；更换机针后注意机针必须安装到且类型相同，如不同类型机针须检查配合关系。

- 1. Adjust the timing between the needle and the hook as follows:**
- 1) Turn the handwheel to bring the needle bar down to the lowest point of its stroke, and loosen setscrew.

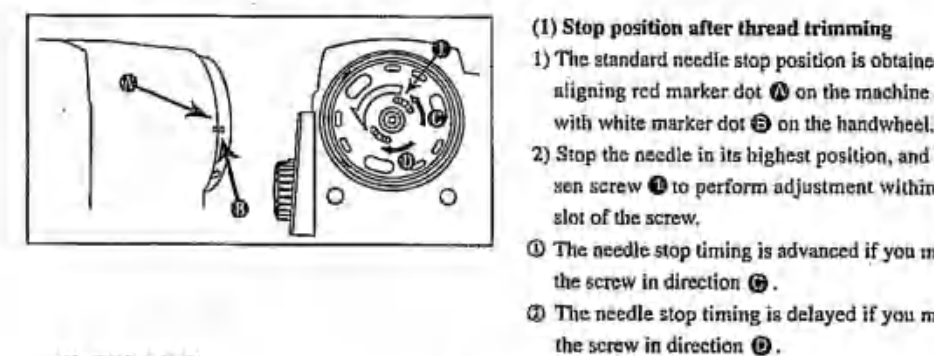
- * Adjusting the needle bar height
- 2) Pull the needle bar, you can see the pinhole baset 1/2 level through edge of inside hook (needle must be position). Turn needle cover wire slot left, then tighten setscrew.
- * Adjusting position a of the hook
- 3) First move the point of hook in the direction, when raising strap pulley needle bar risen from the lowest. Observe cooperate relation of the hook and needle. When hook point above Pinhole about top of 1mm to 1.5mm and when plane of the hook point form plane of needle short bar 0.05mm (keep the align hook blade point with the center of needle), tighten the hook setscrews.

*** Precaution**
If the clearance is too small, the tip of the hook will be abraded. If it is too big, it will lead to skip over.
*Note that the type of hook to be substituted for, when replacing the hook, shall be in conformity with the very type of the hook installed in the sewing machine of original assemblage.
After replacing the needle, the needle must be same type and install right position, if the needle is different type need check match with relation.

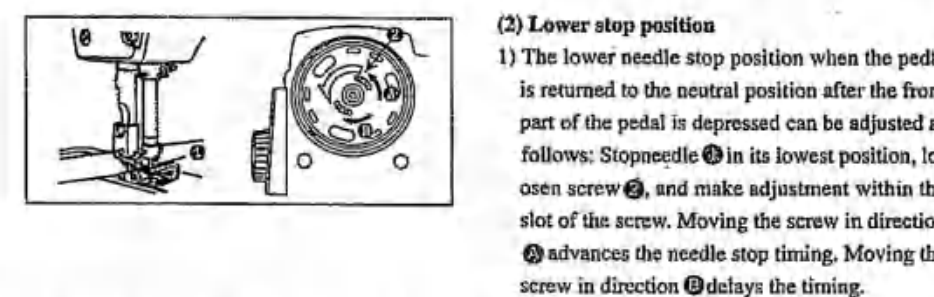
7. 机针停止位置的调整 / ADJUSTING THE NEEDLE STOP POSITION

注意： 为了防止意外启动造成的事故，请关掉电源后进行。
WARNING: Turn OFF the power before starting the work so as to prevent accidents caused by abrupt start of the sewing machine.

- (1) 切线后的停止位置
- 1) 标准的机针停止位置是机架的刻点 ① 和飞轮的白刻点 ② 对齐的位置。
 - 2) 让机针上升到停止位置，调节停针片位 ③，在长孔范围内进行调节。(装有感光片的应用专用工具调节)
- ①向 ② 的方向移动机针停止提前。 ②向 ① 的方向移动机针停止推迟。



- (2) 下停止位置
- 1) 踏板从脚踏变为中立时的机针下停止位置与上停止位置，让机针 ① 下停止之后拧紧螺丝 ②，在长孔范围内进行调节，向 ③ 方向移动机针停止位置提前，向 ④ 方向移动机针停止位置推迟。



8. 踏板压力和行程 / PEDAL PRESSURE AND PEDAL STROKE

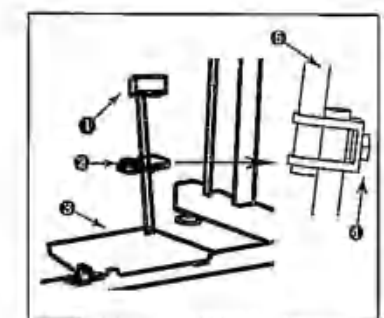
注意： 为了防止意外启动造成的事故，请关掉电源后进行。
WARNING: Turn OFF the power before starting the work so as to prevent accidents caused by abrupt start of the sewing machine.

- (1) 踏板压力的调整
- 1) 更换踏板压力 ① 的位置，可调整踏板压力。
 - 2) 把弹簧挂到左侧之后，压力变小。
 - 3) 挂到右侧之后变大。
- (2) 踏板行程力的调整
- 1) 用脚踏回原位置调节弹簧 ② 可以调整。
 - 2) 拧进调节螺丝时压力变大。
 - 3) 拧松调节螺丝时压力变小。
- (3) 踏板行程的调整
- 1) 把连接杆 ① 插到右侧的孔里之后行程变大。

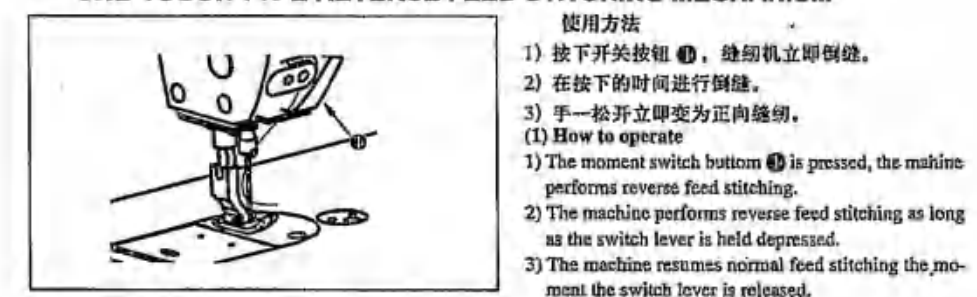
- (1) Adjusting the pressure required to depress the front part of the pedal
- 1) This pressure can be changed by changing the mounting position of pedaling pressure adjust spring ①.
 - 2) The pressure decreases when you hook the spring on the left side.
 - 3) The pressure increases when you hook the spring on the right side.
- (2) Adjusting the pressure required to depress the back part of the pedal
- 1) This pressure can be adjusted using regulator screw ②.
 - 2) The pressure increases as you turn the regulator screw in.
 - 3) The pressure decreases as you turn the screw out.
- (3) Adjusting the pedal stroke
- 1) The pedal stroke increases when you insert connecting rod ① into the right hole

注意： 为了防止意外启动造成的事故，请关掉电源后进行。
WARNING: Turn OFF the power before starting the work so as to prevent accidents caused by abrupt start of the sewing machine.

- (1) 连接杆的安装
- 1) 相箭头方向移动踏板调节杆 ①，让踏板拨杆 ② 和连接杆 ③ 成一直线。
- (2) 踏板的角度
- 1) 调节连接杆的长度就可以自由的改变踏板的倾斜度。
 - 2) 拧松调节螺丝 ④，拉出插入连接杆 ⑤ 进行调整。



10. 触键手动倒缝(盒式) ONE-TOUCH TYPE REVERSE FEED STITCHING MECHANISM

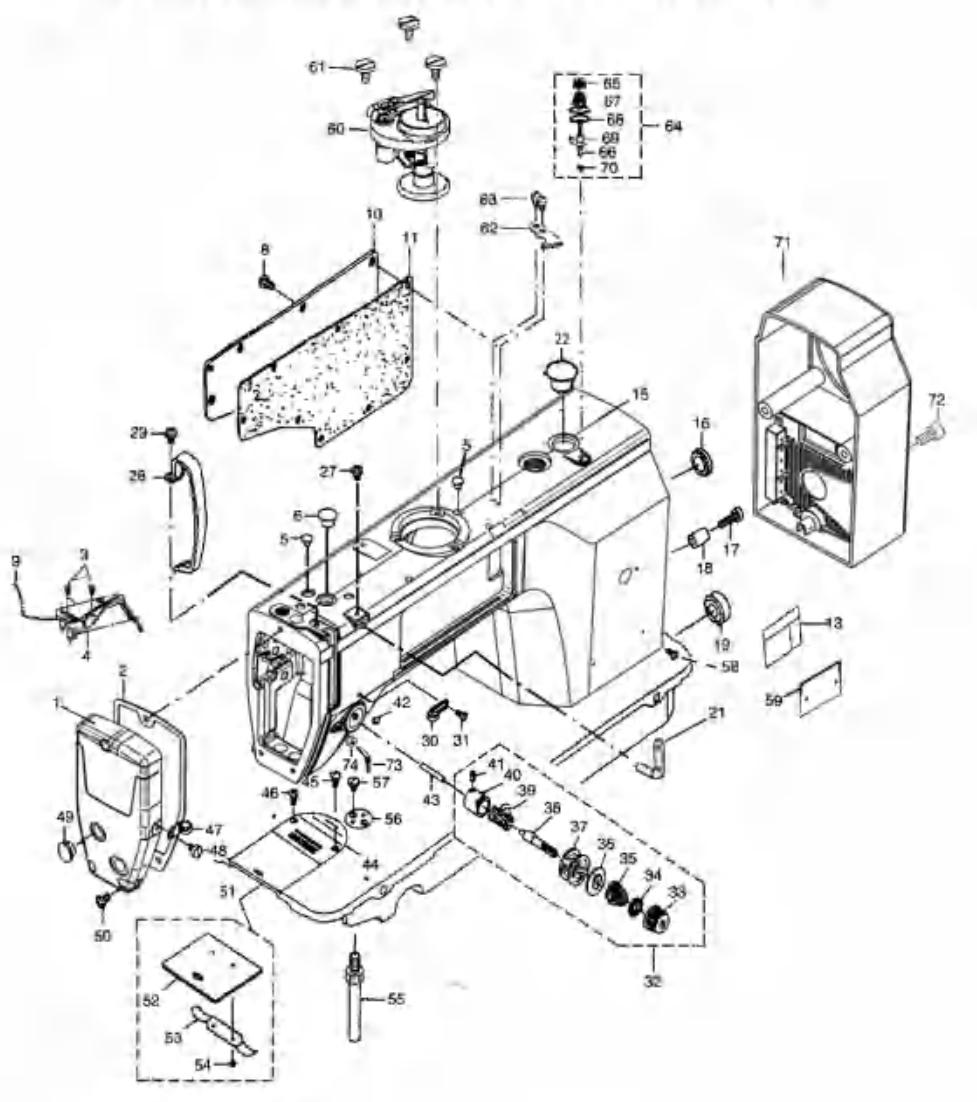


11. 挑线簧 THREAD TAKE UP SPRING

1. 改变挑线簧的预张力:
- 1) 旋松定位螺钉 ①。
 - 2) 把夹线螺钉 ② 朝顺时针方向 (即 A 方向) 转动时，挑线簧的预张力将增大。
 - 3) 把夹线螺钉 ② 朝逆时针方向 (即 B 方向) 转动时，挑线簧的预张力将减小。
2. 改变挑线簧的张力:
- 1) 旋松定位螺钉 ①，取出夹线器(组件) ②。
 - 2) 旋紧定位螺钉 ①，并转动夹线螺钉 ②。
 - 3) 把夹线螺钉 ② 朝顺时针方向 (即 A 方向) 转动时，挑线簧的张力将增大。
 - 4) 把夹线螺钉 ② 朝逆时针方向 (即 B 方向) 转动时，挑线簧的张力将减小。

- 1. Changing the stroke of thread take-up spring ①**
- 1) Loosen setscrew ①.
 - 2) As you turn tension post ② clockwise (in direction A), the stroke of the thread take-up spring will be increased.
 - 3) As you turn the knob counterclockwise (in direction B), the stroke will be decreased.
- 2. Changing the pressure of thread take-up spring ②**
- 1) Loosen setscrew ①, and take out tension asm ②.
 - 2) Loosen setscrew ①, and remove tension post ③.
 - 3) As you turn tension post ④ clockwise (in direction A), the pressure will be increased.
 - 4) As you turn the post counterclockwise (in direction B), the pressure will be decreased.

1. 机壳 · 外装部件 MACHINE FRAME & MISCELLANEOUS COVER COMPONENTS



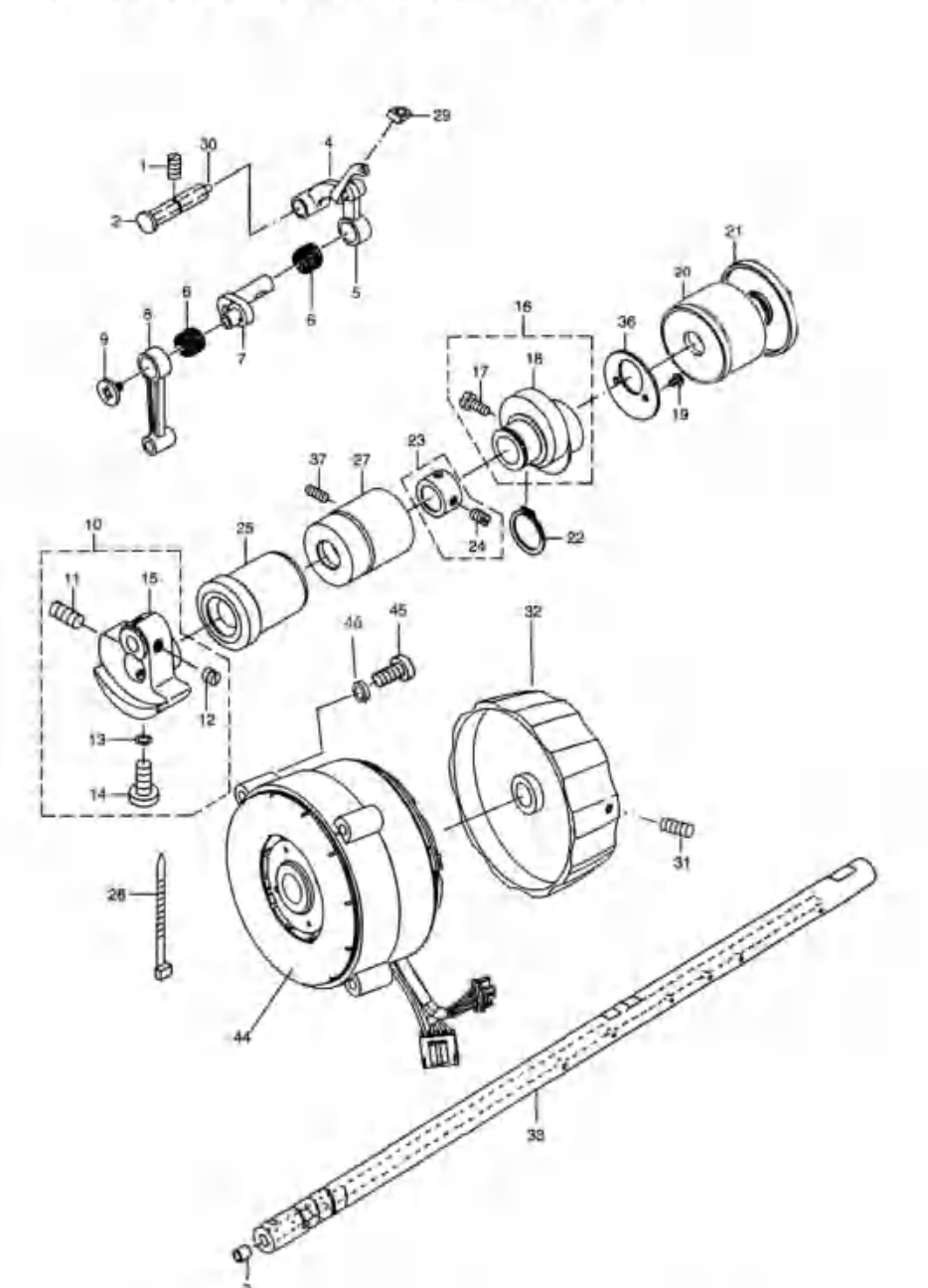
1. 机壳 · 外装部件

序号	件号	名称	Description	数量	备注
Ref. NO.	Part NO.			Qty	Note
1	102.01-01-P	面板	Face plate	1	
2	102.01-02-P	面板垫	Face plate gasket	1	
3	02-609440421-1	油线板螺钉	Screw 9/64x40	2	
4	102.01-04	油线板	Oil board	1	
5	102.01-05	挑线连杆销轴	Rubber plug	3	
6	102.01-06	针杆曲柄橡胶塞	Rubber plug	1	
7	102.01-07	三眼过线板	Three eye line board	1	
8	02-41228923-1	后窗板螺钉	Screw 3/16x28 L=9	1	
9	102.01-09	油线	The oil line	1	
10	102.01-10	后窗板	Side plate	1	
11	102.01-11	后窗板垫	Gasket	1	
13	102.01-13	安全指示牌	Safety label	1	
15	102.01-15-P	机壳	Machine cover	1	
16	102.01-16	送料调节器孔塞	Rubber plug	1	
17	02-51281821-1	倒缝限位套	Reverse feed lever stopper	1	
18	102.01-18	倒缝限位套	Reverse feed lever stopper	1	
19	102.01-19	下轴孔塞	Rubber plug	1	
21	101.01-21	侧线夹线器组件	Thread tension asm.	1	
22	101.01-22	橡皮塞	Rubber plug	1	
27	02-41228923-1	小夹线器组件螺钉	Screw 3/16x28 L=6	1	
28	102.01-28	挑线杆护罩	Thread take-up lever cover	1	
29	02-41228923-1	挑线杆护罩螺钉	Screw 1/8x40 L=6	1	
30	102.01-30	右轴钩	Arm thread guide Right	1	
31	02-611400621-1	右轴钩螺钉	Screw 1/8x40 L=6	1	
32	101.01-32	夹线器组件	Thread tension asm.	1	
33	101.01-33	夹线螺母	Tension nut	1	
34	101.01-34	旋转制动板	Rotating stopper	1	
35	101.01-35	夹线器	Tension spring	1	
36	101.01-36	夹线板	Thread tension disk presser	1	
37	101.01-37	夹线板	Thread tension disk	2	
38	101.01-38	夹线螺钉	Tension post	1	
39	101.01-39	挑线器	Take-up spring	1	
40	101.01-40	挑线器调节座	Tension post socket	1	
41	02-90940421-1	夹线螺钉紧固螺钉	Screw 9/64x40 L=5.5	1	
42	02-815286711-1	夹线器螺钉	Screw 1/64x28 L=7	1	
43	101.01-43	松线钉	Tension releasing	1	
44	101.01-44	踏板	Throat plate	1	
	101.01-44-1	踏板	Throat plate	1	厚料

1. 机壳 · 外装部件

序号	件号	名称	Description	数量	备注
Ref. NO.	Part NO.			Qty	Note
45	02-21400621-1	针板螺钉	Screw 1/64x40 L=6	1	
46	02-21400623-1	针板螺钉	Screw 1/64x40 L=6	1	
47	101.01-47	左线钩	Arm thread guide Left	1	
48	02-611400621-1	左线钩螺钉	Screw 1/64x40 L=6	1	
49	101.01-49	高板调节孔塞	Rubber plug	2	
50	02-41228923-1	面板螺钉	Screw 3/16x28 L=9	1	
51	101.01-51	面板部件	Side plate asm.	1	
52	101.01-52	面板	Side plate	1	
53	101.01-53	推板簧	Butt slide spring	1	
54	02-606569221-3	推板螺钉	Screw 3/32x58 L=2.2	2	
55	102.01-55	压板支柱	Bed screw stud	4	
56	101.01-61	尖边器	Feeder stopper	1	
57	02-91400611-1	尖边器螺钉	Screw 1/64x40 L=6	1	
58	101.01-63	型号牌	Plate	2	
59	102.01-64-P	型号牌	Model plate	1	
60	102.09-32	绕线器组件	Bobbin base	1	
61	102.09-33	绕线器螺钉	Screw	3	
62	102.09-34	刮线刀	Knife	1	
63	102.09-35	刮线刀螺钉	Knife screw	2	
64	102.09-36	绕线头线器组件	Thread tension asm.	1	
65	102.09-36-01	绕线头线螺母	Tension nut	1	
66	102.09-36-02	绕线头线螺钉	Tension post	1	
67	102.09-36-03	绕线头线弹簧	Tension spring	1	
68	102.09-36-04	绕线头线板	Thread tension disk presser	2	
69	102.09-36-05	绕线头线板	Thread tension guide	1	
70	102.09-36-06	绕线头线螺母	Tension nut	1	
71	102.11-34	电机罩壳	Motor cover	1	
72	102.11-35	电机罩壳螺钉	Screw	3	
73	101.01-65	导线钩	Slow wire hook	1	
74	101.01-66	导线钩螺母	Tension nut 1/16x40	1	

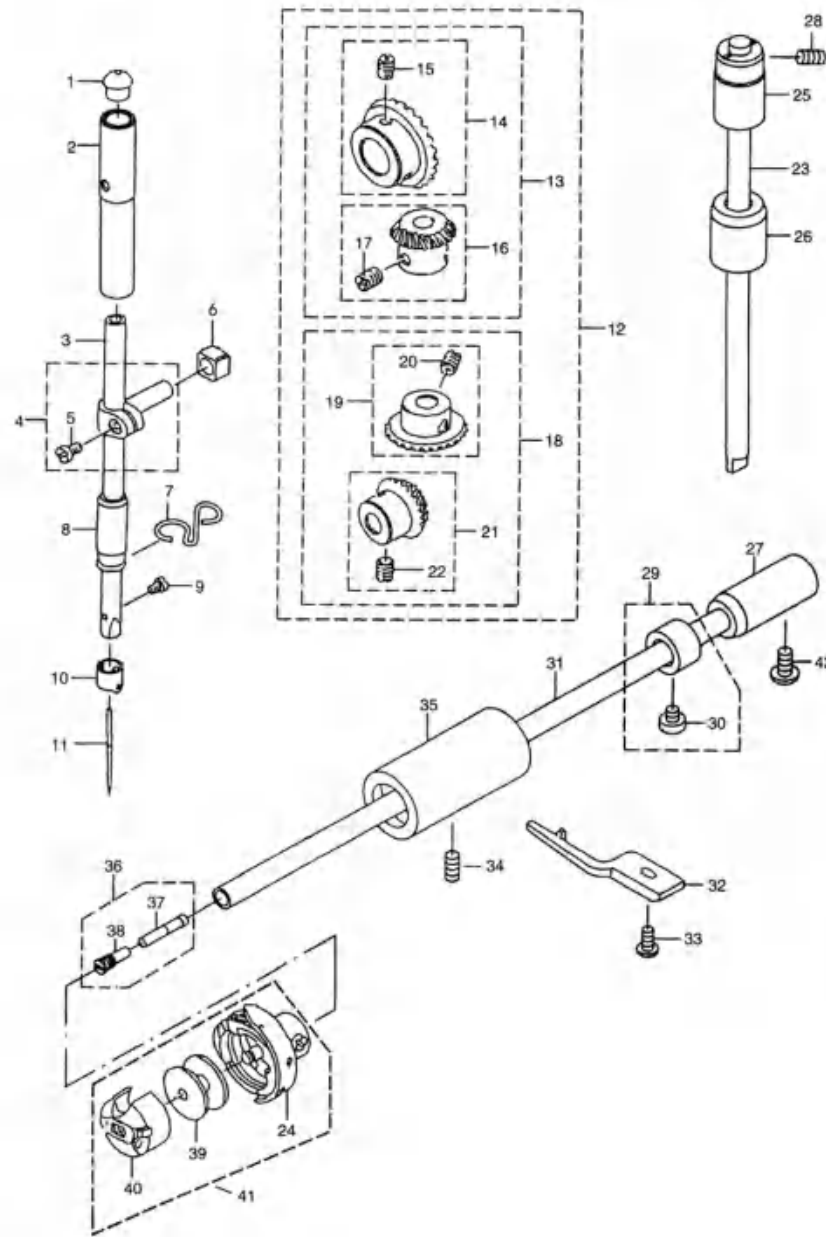
2. 上轴 · 挑线部件 MAIN SHAFT & THREAD-UP LEVER COMPONENTS



2. 上轴 · 挑线部件

序号	件号	名称	Description	数量	备注
Ref. NO.	Part NO.			Qty	Note
1	02-815281151-1	挑线连杆销轴	Screw 1/64x28 L=10.5	1	
2	101.02-02	挑线连杆轴	Thread take-up crank shaft	1	
3	101.02-03	上轴油盖	Roller felt	1	
4	101.02-04	挑线连杆	Thread take-up lever	1	
	101.02-04-1	挑线连杆	Thread take-up lever	1	厚料
5	101.02-05	挑线连杆分组件	Thread take-up lever asm.	1	
6	101.02-06	挑线杆滚针轴承	Needle bearing	2	
7	101.02-07	挑线曲柄部件	Needle bar crank	1	
8	101.02-08	杆针连杆	Needle bar crank rod	1	
9	101.02-09	挑线曲柄左窗螺钉	Left screw 9/64x40 L=4.8	1	
10	102.02-10	针杆曲柄组件	Counter weight asm.	1	
11	02-818281651-1	针杆曲柄紧固螺钉	Screw 9/32x28 L=16	1	
12	02-816400621-1	挑线曲柄定位螺钉	Screw 1/4x40 L=6	2	
13	101.02-13	定位螺钉O型圈	Rubber ring	1	
14	02-418281651-1	针杆曲柄定位螺钉	Screw 9/32x28 L=15.5	1	
15	102.02-15	针杆曲柄	Counter weight	1	
	102.02-15-1	针杆曲柄	Counter weight	1	厚料
16	101.02-16	送料偏心轴组件	Feed drive eccentric cam asm.	1	
17	02-51640111-1	送料偏心轴螺钉	Screw 1/4x40 L=11	2	
18	101.02-18	送料偏心轴	Feed drive eccentric cam	1	
19	02-409400623-1	送料偏心轴盖板螺钉	Screw 9/64x40 L=6	2	
20	102.02-20	上轴后轴套	After on the shaft sleeve	1	
21	102.02-21	上轴油封	Oil seal	1	
22	101.02-22	拾牙连杆升降挡圈	Snap ring	1	
23	102.02-23	上轴轴套	Throat collar asm.	1	
24	02-816400611-1	上轴轴套螺钉	Screw 1/4x40 L=6	2	
25	101.02-25	上轴轴套	Main shaft front bushing asm.	1	
27	102.02-27	上轴中轴套	Bushing, intermediate	1	
28					

3. 针杆·竖轴·下轴部件 NEEDLE BAR, UPRIGHT SHAFT & HOOK DRIVING SHAFT COMPONENTS

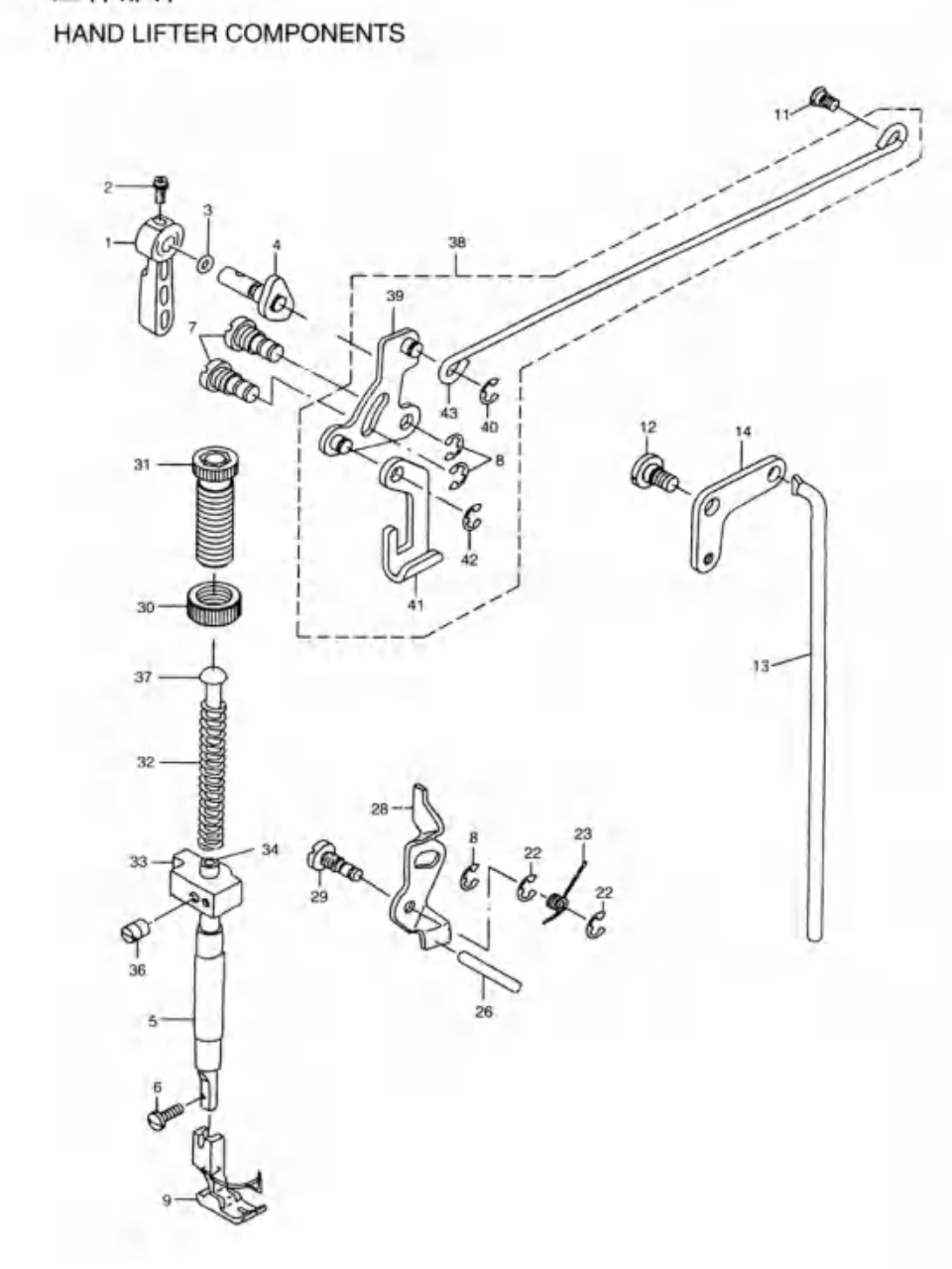


序号 Ref. NO.	件号 Part NO.	名称	Description	数量 Qty	备注 Note
1	101.04-01	压脚扳手	Hand lifter	1	
2	02-509401023-1	压脚扳手螺钉	Screw 9/64x40 L=10	1	
3	101.04-03	压脚扳手轴O型圈	Rubber ring	1	
4	102.04-04	压脚扳手凸轮部件	Hand lifter cam asm.	1	
5	102.04-05	压脚轴套	Presser bar bushing lower	1	
6	02-409400821-1	活压脚螺钉	Screw 9/64x40 L=8	1	
7	102.04-07	前托杆螺钉	Link shaft	1	
8	101.04-08	螺线轴开口挡圈	E-ring 5	2	
9	101.04-09	活压脚部件	Presser foot asm.	1	
10	102.04-10	下压线底板	Wire holder bracket, lower	1	
11	102.04-11	拾压脚拉杆螺钉	Hinge screw	1	
12	3010519025	后托杆轴位螺钉	Hinge screw	1	
13	102.04-13	拾压脚底杆	Knee lifter connecting rod	1	
14	3010481012	拾压脚底杆	Lifting lever link	1	
22	101.04-22	螺线轴开口挡圈	E-ring 5	1	
23	101.04-23	松线顶板复位簧	Tension release return spring	1	
26	102.04-26	松线轴钉	Tension release supporting pin	1	
28	102.04-28	松线顶板	Thread release wire	1	
29	102.04-29	松线顶板螺线轴	Tension release shaft	1	
30	102.04-30	调压螺母	Presser adjusting screw nut	1	
31	102.04-31	调压螺钉	Presser adjusting spring	1	
32	102.04-32	调压簧	Presser adjusting spring	1	
33	102.04-32-1	调压簧	Presser bar guide bracket	1	厚料
34	101.04-35	压杆	Presser bar	1	
36	02-816400811-1	压杆导架螺钉	Screw 1/4x40 L=8	1	
37	102.04-45	拾压脚底杆	Presser guide bar	1	
38	102.04-39	前托杆杆件	Knee lifting cross rod asm	1	
39	102.04-40	拾压脚前托杆部件	Hand lifter link	1	
40	102.04-41	拾压脚轴位螺钉	E-ring 5	1	
41	102.04-42	拾压脚升降板	Lifting lever	1	
42	102.04-43	拾压脚升降板开口挡圈	E-ring 5	1	
43	102.04-44	拾压脚拉杆	Knee lifting cross rod	1	

3. 针杆·竖轴·下轴部件

序号 Ref. NO.	件号 Part NO.	名称	Description	数量 Qty	备注 Note
1	102.03-01	针杆上孔塞	Cap	1	
2	102.03-02	针杆上套	Needle bar bushing upper	1	
3	102.03-03	针杆	Needle bar	1	厚料
4	102.03-03-1	针杆	Needle bar	1	
5	102.03-04	针杆连接柱组件	Needle rod holder asm.	1	
6	02-509400821-1	针杆连接柱螺钉	Screw 9/64x40 L=7.5	1	
7	102.03-06	针杆连接柱滑块	Slide block	1	
8	102.03-07	针杆下套线钩	Needle bar thread guide	1	
9	102.03-08	针杆下套	Needle bar bushing, lower	1	
10	02-508440521-1	机针螺钉	Screw 1/8x44 L=4.8	1	
11	102.03-10	针杆线钩	Needle bar thread guide	1	
12	101.03-11	机针	Needle DBX1 #14	1	厚料
13	101.03-11-1	机针	Needle DBX1 #14	1	
14	101.03-12	伞齿轮组件	Gear&pinion asm.	1	
15	101.03-13	上齿轮组件	Gear&pinion asm., upper	1	
16	101.03-14	上轴伞齿轮组件	Gear&pinion asm., upper	1	
17	02-816400811-1	伞齿轮螺钉	Screw 1/4x40 L=8	2	
18	101.03-16	竖轴上伞齿轮组件	Pinion asm.	1	
19	02-816400811-1	伞齿轮螺钉	Screw 1/4x40 L=8	2	
20	101.03-18	下齿轮组件	Gear&pinion asm., lower	1	
21	101.03-19	竖轴下齿轮组件	Gear asm.	1	
22	02-816400811-1	伞齿轮螺钉	Screw 1/4x40 L=8	2	
23	102.03-23	竖轴	Upright shaft	1	
24	101.03-24	旋梭	Hook asm.	1	厚料
25	101.03-24-1	旋梭	Hook asm.	1	
26	102.03-25	竖轴上轴套	Upright shaft bushing, upper	1	
27	102.03-26	竖轴下轴套	Upright shaft bushing, lower	1	
28	102.03-27	下轴后轴套	Bushing rear	1	
29	02-812280711-1	竖轴上套紧螺钉	Screw 3/16x28 L=7	1	
30	102.03-29	下轴挡圈组件	Thrust collar asm.	1	
31	02-511400511-1	下轴挡圈螺钉	Screw 11/64x40 L=5	2	
32	102.03-31	下轴	Lower shaft	1	
33	101.03-32	旋梭定位钩	Bobbin case holder	1	
34	02-511401021-1	旋梭定位钩螺钉	Screw 11/64x40 L=9.5	1	
35	02-812280711-1	下轴前轴套螺钉	Screw 3/16x28 L=7	1	
36	102.03-35	下轴前轴套	Lower shaft front metal	1	
37	101.03-38	下轴限油组件	Oil seal screw asm.	1	
38	101.03-39	下轴限油芯	Oil wick	1	
39	101.03-40	下轴限油螺钉	Oil seal screw	1	
40	101.03-41	梭心	Bobbin	1	
41	101.03-43	梭壳	Bobbin case	1	
42	101.03-43-1	梭壳壳组件	Hook bobbin case asm.	1	厚料
43	101.03-43-1	梭壳壳组件	Hook bobbin case asm.	1	
44	02-612281311-1	下轴后轴套螺钉	Screw 3/16x28 L=13	1	

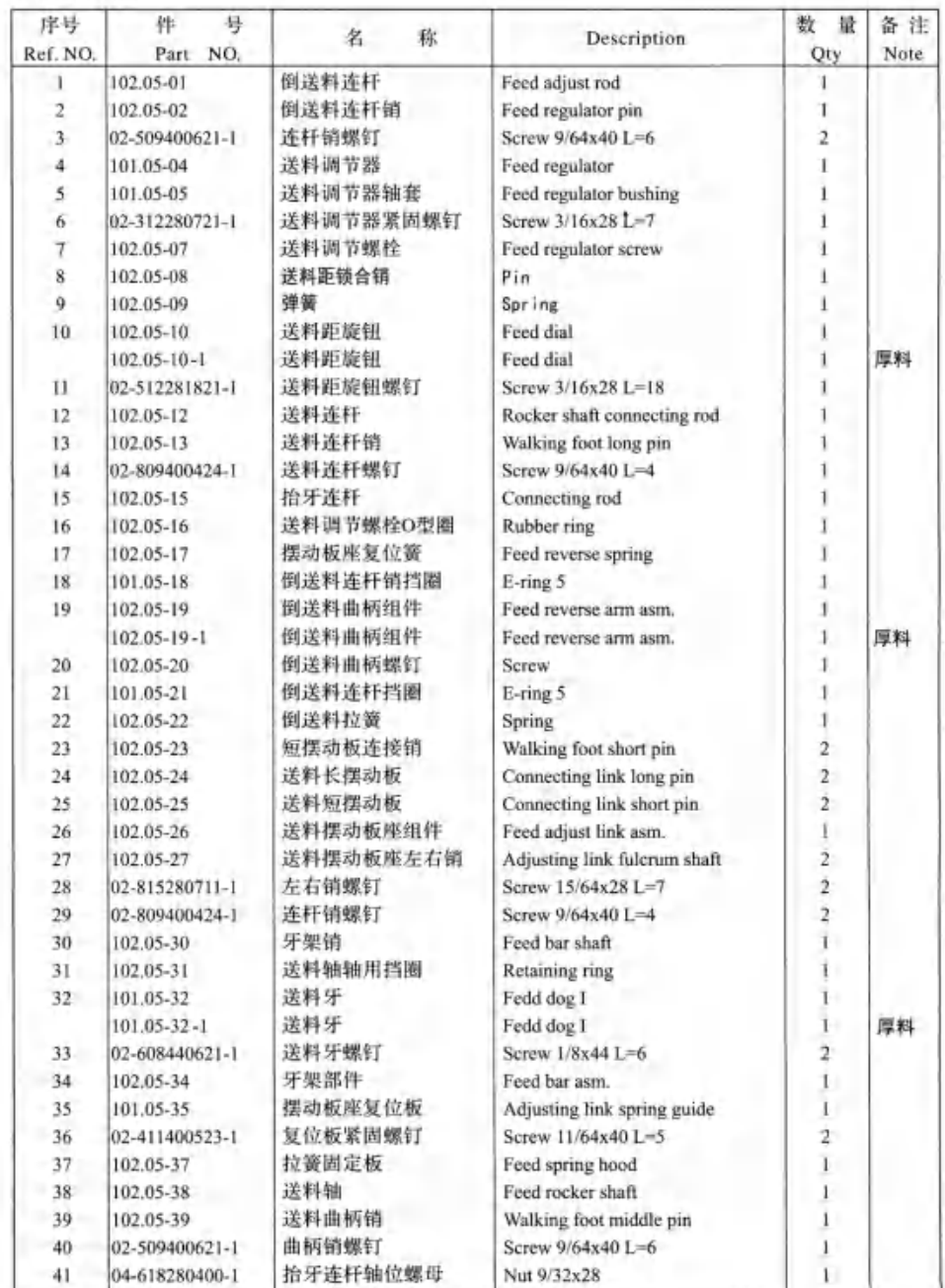
4. 压杆部件



5. 送料部件

序号 Ref. NO.	件号 Part NO.	名称	Description	数量 Qty	备注 Note
1	102.05-01	倒送料连杆	Feed adjust rod	1	
2	102.05-02	倒送料连杆销	Feed regulator pin	1	
3	02-509400621-1	连杆销螺钉	Screw 9/64x40 L=6	2	
4	101.05-04	送料调节器	Feed regulator	1	
5	101.05-05	送料调节器轴套	Feed regulator bushing	1	
6	02-312280721-1	送料调节器紧固螺钉	Screw 3/16x28 L=7	1	
7	102.05-07	送料调节器螺帽	Feed regulator screw	1	
8	102.05-08	送料调节器销	Pin	1	
9	102.05-09	送料调节器簧	Spring	1	
10	102.05-10	送料调节器轴	Feed dial	1	厚料
11	102.05-10-1	送料调节器轴	Feed dial	1	
12	02-512281821-1	送料调节器轴螺钉	Screw 3/16x28 L=18	1	
13	102.05-12	送料连杆	Rocker shaft connecting rod	1	
14	102.05-13	送料连杆销	Walking foot long pin	1	
15	02-809400424-1	送料连杆螺钉	Screw 9/64x40 L=4	1	
16	102.05-15	送料连杆	Connecting rod	1	
17	102.05-16	送料调节器O型圈	Rubber ring	1	
18	102.05-17	送料调节器复位簧	Feed reverse spring	1	
19	101.05-18	送料调节器销挡圈	E-ring 5	1	
20	102.05-19	倒送料曲柄组件	Feed reverse arm asm.	1	厚料
21	102.05-19-1	倒送料曲柄组件	Feed reverse arm asm.	1	
22	102.05-20	倒送料曲柄螺钉	Screw	1	
23	101.05-21	倒送料曲柄挡圈	E-ring 5	1	
24	102.05-22	倒送料拉簧	Spring	1	
25	102.05-23	短摆板连接销	Walking foot short pin	2	
26	102.05-24	送料长摆板	Connecting link long pin	2	
27	102.05-25	送料短摆板	Connecting link short pin	2	
28	102.05-26	送料摆板座组件	Feed adjust link asm.	1	
29	102.05-27	送料摆板座左右轴	Adjusting link fulcrum shaft	2	
30	02-815280711-1	左右销螺钉	Screw 1/8x44 L=6	2	
31	02-809400424-1	送料销螺钉	Screw 9/64x40 L=4	2	
32	102.05-30	送料轴轴套	Feed bar shaft	1	
33	102.05-31	送料轴轴套挡圈	Retaining ring	1	
34	101.05-32	送料轴	Fedd dog 1	1	厚料
35	101.05-32-1	送料轴	Fedd dog 1	1	
36	02-608440621-1	送料轴螺钉	Screw 1/8x44 L=6	2	
37	102.05-34	送料轴部件	Feed bar asm.	1	
38	101.05-35	送料轴复位簧	Adjusting link spring guide	1	
39	02-411400523-1	复位簧紧固螺钉	Screw 11/64x40 L=5	2	
40	102.05-37	拉簧固定板	Feed spring hood	1	
41	102.05-38	送料轴	Feed rocker shaft	1	
42	102.05-39	送料轴轴套	Walking foot middle pin	1	
43	02-509400621-1	送料轴轴套	Screw 9/64x40 L=6	1	
44	04-618280400-1	送料轴轴套螺母	Nut 9/32x28	1	

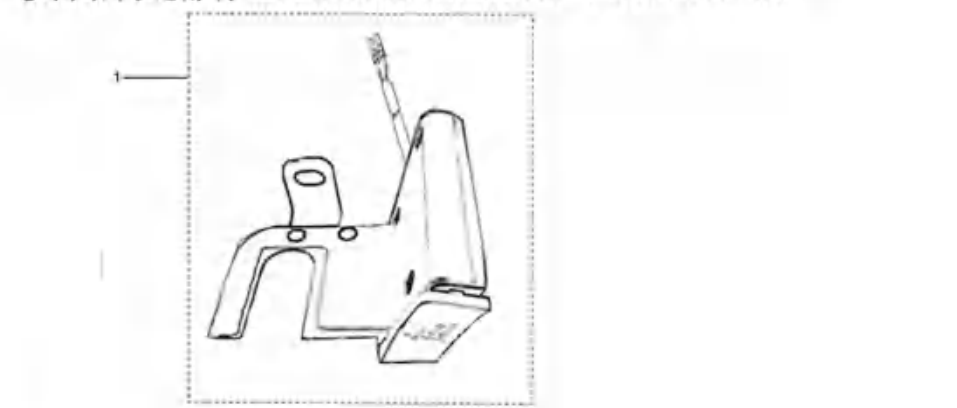
5. 送料部件



5. 送料部件

序号 Ref. NO.	件号 Part NO.	名称	Description	数量 Qty	备注 Note
42	101.05-42	送料曲柄组件	Feed rocker shaft crank asm.	1	
43	101.05-42-1	送料曲柄组件	Feed rocker shaft crank asm.	1	厚料
44	02-412281621-1	送料曲柄螺钉	Screw 3/16x28 L=15.5	1	
45	102.05-44	送料曲柄轴套	Lifting rocker asm.	1	
46	02-412281421-1	送料曲柄轴套	Screw 3/16x28 L=14	1	
47	102.05-46	送料曲柄轴套	Hinge screw	1	
48	102.05-47	送料曲柄轴套	Feed driving shaft	1	
49	02-816400611-1	送料曲柄轴套	Thrust collar asm.	1	
50	102.05-49	送料曲柄轴套	Feed rocker shaft bushing	2	
51	02-411400721-1	送料曲柄轴套	Screw 11/64x40 L=7	2	
52	102.05-50	送料曲柄轴套	Retaining ring	1	
53	102.05-51	送料曲柄轴套	Feed bar crank asm.	1	
54	02-412281421-1	送料曲柄轴套	Screw 3/16x28 L=14	1	
55	102.05-52	送料曲柄轴套	Driving shaft crank asm.	1	厚料
56	102.05-52-1	送料曲柄轴套	Driving shaft crank asm.	1	
57	02-511401121-1	送料曲柄轴套	Screw 11/64x40 L=10.5	1	
58	102.05-59	送料曲柄轴套	Thrust feed control lever asm.	1	
59	02-816400611-1	送料曲柄轴套	Screw 1/4x40 L=6	2	
60	102.05-63	送料曲柄轴套	Rubber ring	1	
61	102.05-64	送料曲柄轴套	Feed reverse shaft	1	
62	102.05-65	送料曲柄轴套	Feed lever metal	1	
63	02-816400911-1	送料曲柄轴套	Screw 1/4x40 L=8.5	1	
64	02-816401041-1	送料曲柄轴套	Screw 1/4x40 L=10	1	
65	102.05-68	送料曲柄轴套	Reverse feed control lever	1	

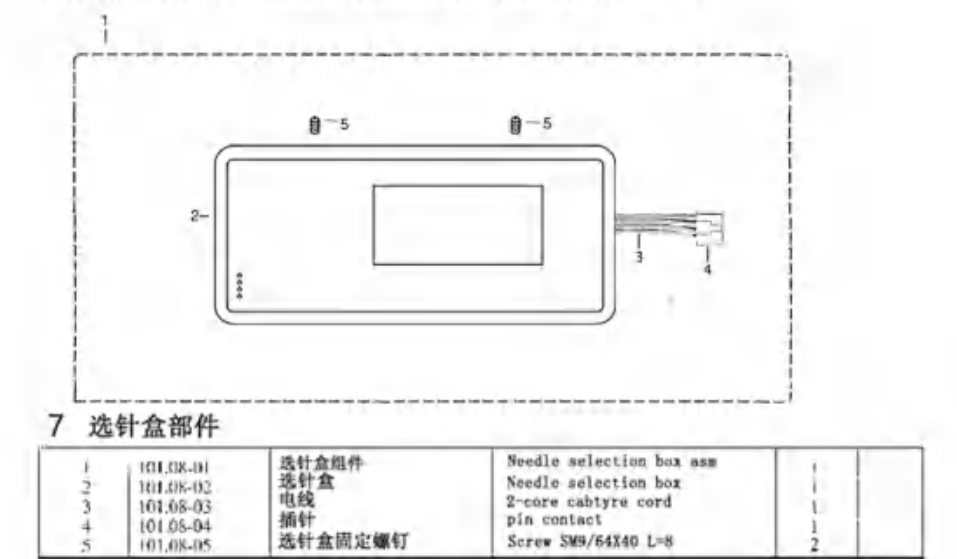
6. 自动倒缝部件 AUTOMATIC REVERSE COMPONENTS



6. 自动倒缝部件

序号 Ref. NO.	件号 Part NO.	名称	Description	数量 Qty	备注 Note
1	101.07-01	自动倒缝开关组件	Reverse feed switch asm.	1	

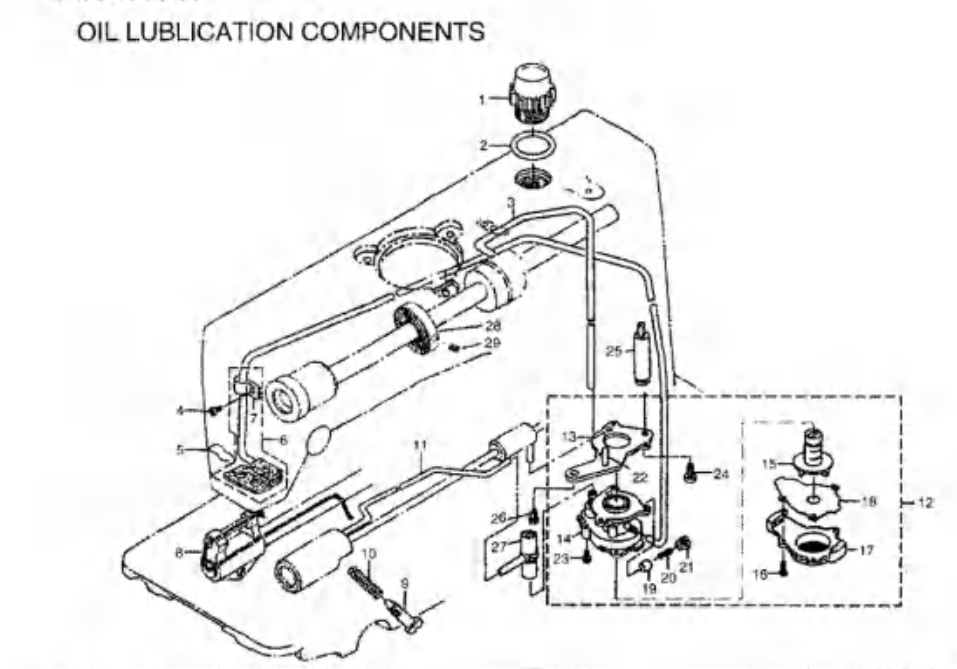
7. 选针盒部件 NEEDLE SELECTION BOX COMPONENTS



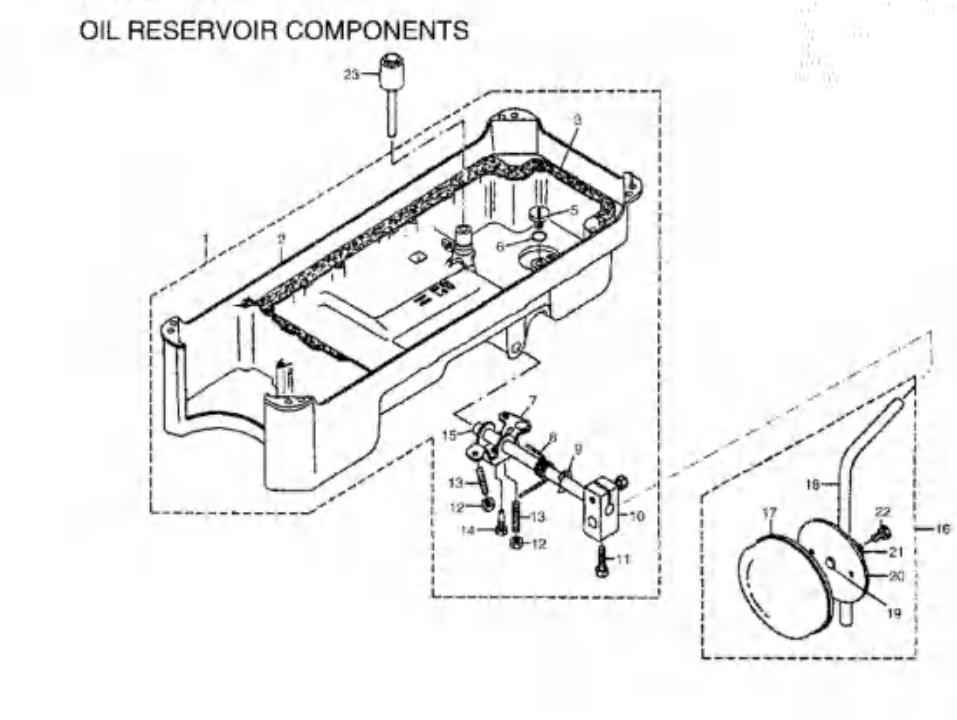
7. 选针盒部件

序号	件号	名称	Description	数量	备注
1	101.03-01	选针盒组件	Needle selection box asm	1	
2	101.03-02	选针盒	Needle selection box	1	
3	101.03-03	电线	2-core cable	1	
4	101.03-04	插针	pin contact	1	
5	101.03-05	选针盒固定螺钉	Screw 3/8x40 L=8	2	

8. 润滑油部件



9. 油盘部件



8. 润滑油部件

序号 Ref. NO.	件号 Part NO.	名称	Description	数量 Qty	备注 Note
1	102.09-01	油窗	Oil sight window	1	
2	102.09-02	油窗O型圈	Rubber ring	1	
3	102.09-03	上轴供油管	Main shaft oil tube	1	
4	02-412280623-1	回油管头螺钉	Screw 3/16x28 L=6	1	
5	102.09-05	回油管垫	Oil felt presser	1	
6	102.09-06	回油管组件	Oil return tube asm	1	
7	102.09-07	回油管头	Holder	1	
8	101.09-08	送料轴油线	Oil wick	1	
9	102.09-09	旋梭油室调节螺钉	Oil adjusting screw	1	
10	102.09-10	旋梭油室调节簧	Spring	1	
11	102.09-11	旋梭供油管	Oil tube	1	
12	101.09-12	油泵部件	Lubricating oil pump asm	1	
13	101.09-13	油泵安装板	Oil pump installing base	1	
14	101.09-14	油泵体	Oil pump	1	
15	101.09-15	油泵叶轮	Oil pump impeller	1	
16	101.09-16	油泵盖螺钉	Screw D-3 L=10	3	
17	101.09-17	油泵盖	Lubricating oil pump cover	1	
18	101.09-18	油泵叶轮托板	Oil pump impeller cover	1	
19	101.09-19	回油管塞	Plunger	1	
20	101.09-20	柱塞簧	Plunger spring	1	
21	101.09-21	柱塞螺钉	Plunger screw	1	
22	101.09-22	下轴供油管	Hook driving shaft oil tube	1	
23	101.09-23	油泵安装螺钉	Screw M3 L=8	3	
24	02-611401021-1	螺栓连接螺钉	Screw 11/64x40 L=9.5	1	
25	101.09-26	螺栓连接柱	Oil pump support, large	1	
26	02-615281221-1	油泵螺钉	Screw 15/64x28 L=12	1	
27	101.09-28	供油管接头	Rubber joint	1	
28	102.09-37	绕线器驱动轮	Bobbin pulley	1	
29	102.09-38	绕线器驱动轮螺钉	Screw	2	

9. 油盘部件

序号	件号	名称	Description	数量	备注
1	101.10-01	油盘部件	Oil reservoir asm	1	
2	101.10-02	油盘	Oil reservoir	1	
3	101.10-03	油盘垫	Oil reservoir gasket	1	
4	02-620240721-1	排油孔螺钉	Screw 5/16x24 L=7	1	
5	101.10-06				