



Innovative Solutions For  
Practice Dental Restoration

# PRODUCTS CATALOG

DENTEX CO., LTD



## About Us

Dentex Co., Ltd, a dental restorative materials manufacturer, has been at the forefront of the industry since its establishment in 2005. With an unwavering commitment to research, development, and production, Dentex has earned a reputation for delivering high-quality dental resin composites and related products. Our comprehensive range of advanced restorative materials incorporates cutting-edge technologies. By adhering to rigorous quality standards, Dentex has obtained ISO 9001 and ISO 13485 certifications, along with CE certificates and FDA approval. This commitment to excellence has propelled us to become a trusted player in the global market, offering technically innovative aesthetic and restorative products to dental customers worldwide. Dentex's employees are driven, dedicated, and committed to excellence, boasting unrivaled expertise in the field. We place great importance on sharing our research and scientific knowledge for the benefit of our customers, continuously strive to deliver superior performance.

# CONTENTS

## Composite

1.Composites and Technology	01-02
2.DX. Universal	03
3.DX. Posterior	04
4.DX. Enamel	05
5.DX. Incisal / Gingiva	06
6.DX. Whiten	07
7.DX. Ceram	08
8.DX.Flow	09-10
9.DX. Flow-Opaque	11
10.DX. Flow-Color	12

## Bonding

1.DX. BOND UNI 8th Generation	13
2.DX. BOND VII 7th Generation	14
3.DX. BOND V 5th Generation	15
4.DX. Etch Phosphoric Etchant	16
5.Porcelain Etch	17
6.PC PRIMER Porcelain Silane Primer	18
7.MZ PRIMER Metal/Zirconia Primer	18
8.DENLINK Porcelain Fracture Repair Kit	19

## Luting

1.Veneer/Inlay/Onlay Luting Kit	20
2.DX. Flow-Veneer Luting Cement	21
3.DX. CORE	22
4.DEN CEM I Self Etching, Dual Cure	23
5.DEN CEM II Self Etching, Powder / Liquid	24

## 01

6.DX.CEM-Ionomer Powder / Liquid	25
----------------------------------	----

## Various Products 26

1.DX. AIR-BLOCK	26
2.DX. Filling Instrument	27
3.DX. VOTEX Polishing System	28

## Temporary 29

1.DX. TEMP Temporary C&B Resin	29
2.DX. TEMP CEM Temporary C&B Cement	30
3.DX. TEMP-LC Temporary Light Cure Composite	31

## Oral Care 32

1.DX. SEAL Pit & Fissure Sealant	32
2.Fluoride Varnish	33
3.DENSHIELD Dental Desensitizer	34

## Orthodontic 35

1.ORTHOBOND Dental Bonding Adhesives	35
2.ORTHOBOND Blue Dental Bonding Adhesives	36

## Root Canal 37

1.ROOT CANAL GEL EDTA Lubrication	37
2.DX. CAL Calcium Hydroxide Paste	38
3.DX.CAL-LC Light Cure Calcium Hydroxide Base/Liner	38

## Lab Products 39

1.BioPAEK® PEEK Dental Milling Blank	39-42
2.DENCOVER Light Cure Liquid Polish	43
3.Denture Adhesive Cream	44

# Composites



Universal



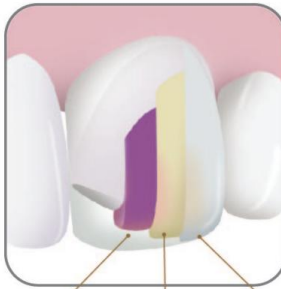
Posterior



Enamel



Incisal



Dentin Shade Enamel Shade Incisal Shade



Dentin: DA2 Universal: A2 Enamel: EA2 Incisal: CL

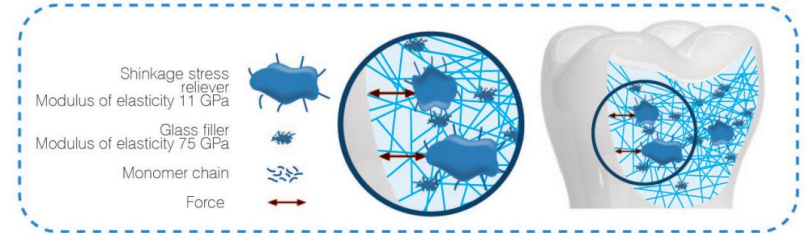
Transparency comparison of Light Cure Composite in 1mm thickness

# Innovation Technologies

## 1 The novel methacrylate monomers



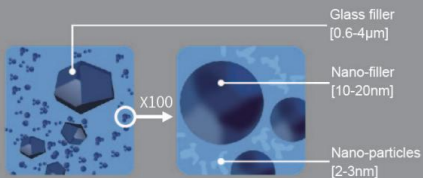
The novel methacrylate monomers clearly reduces polymerization shrinkage, acts as a unique shrinkage stress reliever (like a spring).



The shinkage reliever in DX. Composite restoration acts as an energy absorbing and reduces stress within the restoration

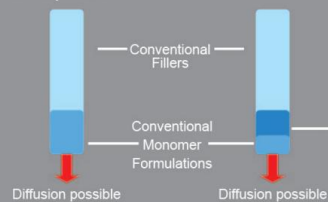
## 2 Nano-ceramic Effect: Low monomer leakage

### DX.Ceramic technology

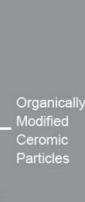


Organically modified ceramic nano-particle greatly reduces the use of conventional resin

### Conventional Composite



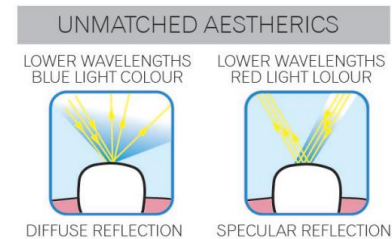
### DX.Ceramic



DX.Ceramic has lower monomer leakage

## 3 Light reflection like a natural tooth

Just like a natural human tooth, and unlike other universal composites, DX. composite adapts to the light wavelength by reflecting diffuse light at lower wavelengths and specular light at higher wavelengths. It provides a better natural-looking.



# DX. Universal

Light Curing Dental Composite Resins



Kit

DX. Universal 5 x 4g (A1, A2, A3, A3.5, B1), customized  
DX. Etch 37 2.5ml  
DX. Bond V 5ml

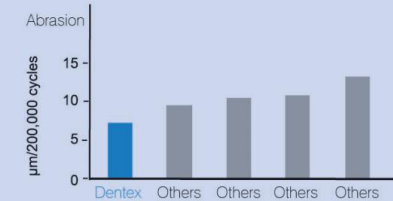
DX. Universal Composite is a light curable composite. It can be used for anterior and posterior dentine and enamel restorations. The inorganic filler loading is 83 % w/w. The particle size varies from 0.002 to 5 microns.

## Comparison



## Physical characteristics of DX. Universal Physical Properties

Cure time(s)	20
Cure depth(mm)	2.40
Compressive strength (MPa)	367
Flexural strength (MPa)	135
Abrasion ( $\mu\text{m}/200\text{k}$ times)	5.20
Shrinkage(%)	2.00



## Indications:

- Class I to V restorations; Reconstruction of tooth defects; Indirect restorations including inlays, onlays and veneers.
- Core build-up.

## Advantages:

- The novel Nano-Ceramic Technology provides a lower polymerization stress and shrinkage. It also allows a reduction of using conventional resin
- Great handling, non-sticky to the instrument
- Universal anterior and posterior composites
- High radio opacity
- Less patient sensitivity
- Perfectly match the VITA CLASSIC GUIDE

## Single Syringe Packaging Specifications:

- Specification: 4g
- Shade: A1, A2, A3, A3.5, A4, B1, B2, B3, C2, C3

# DX. Posterior

Light Curing Dental Composite Resins



DX. Dentin shade Composite 6 x 4.0g (DA1 x 1, DA2 x 2, DA3 x 2, DA3.5 x 1)  
DX.BOND VII Dental Bonding Adhesives: 3ml

### Indications:

- All classes of direct restorations of posterior and other dentin

### Advantages:

- High filler content up to 82%w/w, excellent compressive and flexural strength
- Excellent handling, suitable opacity close to dentin
- Extremely high abrasion resistance
- Low shrinkage

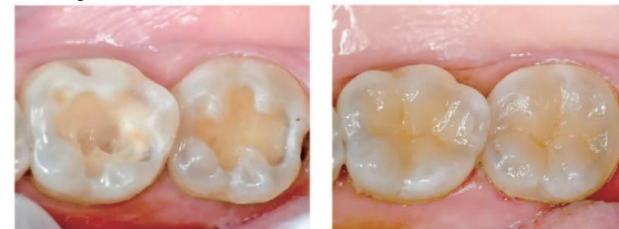
### Comparison of Enamel and Dentin shade

	Enamel Shade	Dentin Shade
Filler particle size	0.01-5um	0.04-10um
Flexural strength	127Mpa	145Mpa
Shrinkage	2.2%	1.8%
Filler load	75%Wt	82%Wt
Polishability	Excellent	Good
Abrasion ( um/200k times)	6.10	3.80

### Single Syringe Packaging Specifications:

- Specification: 4g
- Shade: DA1, DA2, DA3, DA3.5, DB1, DB2;

### Comparison



Before

After

# DX.Enamel

Light Curing Dental Composite Resins

Kit



DX. Enamel & Incisal 4 × 4g(EA1, EA2, EA3, CL)  
 DX. Posterior dentin shade 2×4g(DA2, DA3)  
 DX.Bond V 5ml

### Indications:

- Class III & V restorations, other tooth enamel restorations
- Clear(CL): Adult enamel margin
- Amber(AM): Middle-Aged oder adult enamel margin
- Blue(TB): Teenager enamel margin

### Advantages:

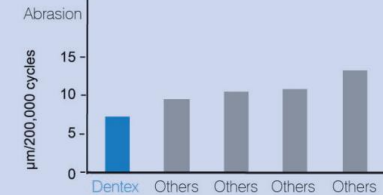
- Excellent handling, long-lasting and natural-looking
- Easy polishing to a high gloss
- High radiopacity
- A natural tooth apperance achieved by combining with Dentex dentin and incisal composites

### Comparison



### Physical characteristics of enamel composite material

Cure time(s)	20
Cure depth(mm)	2.40
Compressive strength (MPa)	332
Flexural strength (MPa)	127
Abrasion ( $\mu\text{m}/200\text{k times}$ )	6.10
Shrinkage(%)	2.20



### Single Syringe Packaging Specifications:

- Specification: 4g
- Shade: EA1, EA2, EA3, EA3.5, EB1, EB2



# DX. Incisal

Light Curing Dental Composite Resins



## Indications:

- Esthetic restoration of enamel and anterior tooth

## Advantages:

- Clear(CL): Suitable for most adult enamel margin
- Amber(AM): Suitable for middle-aged and old people enamel margin
- Blue(TB): Suitable for teenager enamel margin

## Packaging Specifications:

- Specification: 4g
- Shade: Clear (CL), Amber (AM), Blue (TB);

## Physical characteristics of enamel composite material

Cure time(s)	20
Cure depth(mm)	2.40
Compressive strength (MPa)	332
Flexural strength (MPa)	127
Abrasion ( $\mu\text{m}/200\text{k times}$ )	6.10
Shrinkage(%)	2.20



# DX. Gingiva

Light Curing Dental Composite Resins



## Indications:

- Class V restorations (cervical caries, root erosion, V-Shaped defects) Especially in cases of retreating gingiva such as periodontic disease
- Covering of exposed discolored hypersensitive cervical areas (in the visible anterior area)
- Highly aesthetic correction of malposition of teeth

## Advantages:

- Aesthetic and functional solution for cavities and V-shaped defects in cervical areas exposed by gingival recession
- High abrasion resistance, and compressive strength

## Packaging Specifications:

- Specification: 4g
- Shade: G1, G2, G3



# DX. Whiten

Light Curing Dental Composite Resins



DX. Whiten composite belongs to Enamel shade composite system. In clinic practice, two or three kinds of veneer whitening composites are used to repair veneer. The whitening simulation is successfully achieved with nature tooth appearance.

## Indications:

- Discolored veneer and composite inlay

## Advantages:

- Three shades of stratified filling to rebuild the layering of tooth
- Ideal viscosity, easily to shape
- High simulation, natural esthetic
- Good polishability and durability

## Packaging Specifications:

- Specification: 4g
- Shade: EXW (Extreme white), EW (Enamel white), BL(Bleach)

## Comparison



Before

After

## Application

- **EXW (Extreme white)**  
The whitest composite which could cover dark background like dental fluorosis and tetracycline teeth, suitable for the bottom layer of veneer.
- **EW (Enamel white)**  
Medium white and opacity, suitable for common tooth color.
- **BL (Bleach)**  
Non-opaque, appears transparent milky white after curing, suitable for the surface of veneer.  
**Remark: Method of use: EXW – EW – BL, EXW – BL or EW – BL. Recommend to use at least 2 different shades, the increasing transparency could effectively simulate nature tooth.**



Increased transparency from EXW to BL

# DX.Ceram

Light Curing Dental Composite Resins



DX. Ceram Capsule comprises not only conventional, but also Zirconia fillers. Using ceramic technology, all performances are improved and the curing depth is increased up to 5 mm.

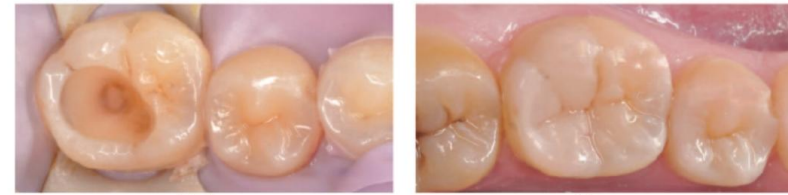
## Indications:

- All classes of direct restoration, core buildups, indirect restorations including inlays, onlays and veneer.

## Advantages:

- Curing depth up to 5mm, more efficient operation
- High abrasion resistance, low shrinkage, easy polishing, great discoloration
- High radiopaque
- Single use to eliminate contamination

## Comparison

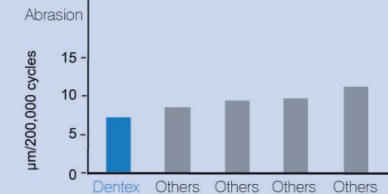


Before

After

## Nano-Ceramic composite has excellent physical properties

Cure time(s)	20
Cure depth(mm)	5.00
Compressive strength (MPa)	367
Flexural strength (MPa)	140
Abrasion ( $\mu\text{m}/200\text{k times}$ )	4.40
Shrinkage(%)	2.00



## Packaging Specifications:

DX.Ceram Capsule Standard Kit

- Capsules: 60 x 0.3g Capsule(A1 x 5, A2 x 20, A3 x 20, A3.5 x 10, A4 x 5)
- DX.BOND VII 3ml
- Brush: 20pcs

DX.Ceram Capsule Intro Kit

- Capsules: 10 x 0.3g Capsule(A1, A2 x 3, A3 x 3, A3.5 x 2, A4)

**Note:** Shade could be designated

# DX.FLOW

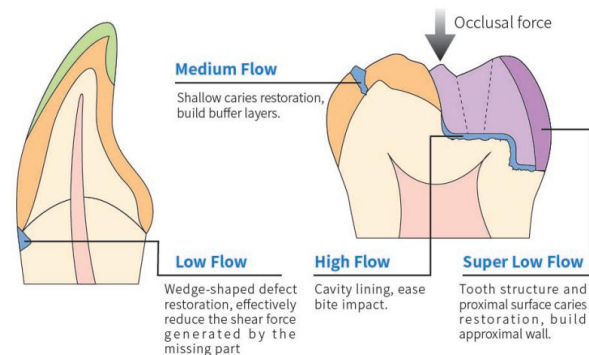
Light Curing Dental Composite Resins



In modern dental practice, flowable resin is widely used. In order to meet the needs of dentists in different clinical practices, the DX.flowable resin consists of four products with different viscosities. ...it flows when you want it...,stays where you need it.

## Indications:

- Class III and V restorations, small class IV caries, especially for repairing small defects of teeth



## Advantages:

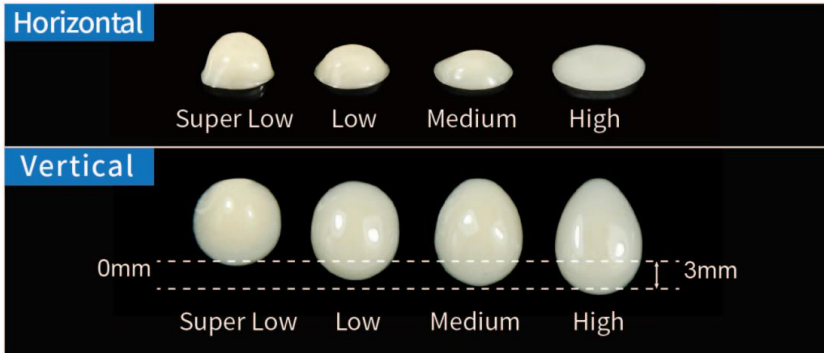
- Different viscosities for different restorations
- Unique patented oligomer technology resulting in excellent strength and elastic modulus
- High radiopacity
- Fluoride release to effectively prevent from secondary caries

## Packaging Specifications:

- Viscosity: Super Low Flow, Low Flow, Medium Flow, High Flow
- Specification: 2.0g (Two Syringes), 3.0g(One Syringe)
- Shade: A1, A2, A3, A3.5, B1, B2
- 5 tips (One Syringe), 10 tips (Two Syringes)



Indication for different viscosity



Under the same measurement conditions, the same amount of composite was placed onto flat surface for one minute or dropped on to flat surface following vertical standing up for one minute.

## Application Examples

### High Flow:

High fluidity, used in cavity lining and small damaged tooth repair



### Medium Flow:

Medium fluidity, used for restoration of small cavity of Class I, II, III



### Low Flow:

Class III and V restorations, repairs of inlay, veneer edge fissure and wedge-shaped defect



### Super Low FLOW:

Class II restoration, proximal surface caries restoration, building up approximal wall



# DX.Flow - Opaque

Light Curing Dental Composite Resins



Thickness: 0.2mm Curing time:30-40 seconds

## Indications:

- Opaque color for metal or discolored tooth.
- Curing time: 30 – 40 secs, place less than 0.3mm in each increment

## Advantages:

- Multiple shades for different background colors of teeth
- Delicate, uniform, and good masking effect
- Suitable flowability to reach all areas

## Packaging Specifications:

- Specification: 2.0g
- Shade : OA2, OA3

## Comparison



Before



After

# DX. Flow-Color

Light Curing Dental Composite Resins



-  Black BL
-  Brown TR
-  Orange Brown DY
-  Milky White WH
-  Blue CY
-  Crimson DR
-  Yellow YE
-  Clear BB

## DX.Color Kit specification

- Specification: 1.5g
- Aesthetic brush: 1 thick ,1 thin
- Packaging: 8
- Tips: 2 x 14 pcs

## Advantages:

- Nice dying effect, good color stability
- Less material used with great dying effect
- Great flowability and reach anywhere with a brush or tip
- Various colors for different combinations without impact the curability

## Single Syringe Packaging Specification

- Specification: 1.5g
- Shade: Milky white, Orange Brown, Brown, Yellow, Crimson, Blue, Black, Clear
- Tips: 5 pcs

## Application Examples

-  Orange Brown
-  Brown
-  Crimson
-  Milky White



Simulated pit and fissure staining.



Simulated crack, contralateral dental white spot effect, fluorescence effect, posterior dental crest coloring.

-  Yellow



Simulated tooth neck staining, enamel cracks and simulated stained tissue.

-  Black



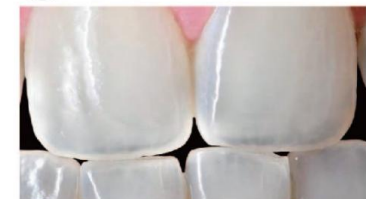
Simulated deep dyed tissue or adjusted resin saturation with milky white.

-  Blue



After mixing with other colors, to simulate the transparency of the incisal edge and the fluorescent effect.

-  Clear



Simulated enamel by using other color combination, adjusted color appearance

# DX.BOND UNI

Dental Bonding Adhesives

8th Generation



DX.BOND UNI is a single-component, light-cure 8th generation adhesive for direct and indirect bonding procedures with or without etching protocols. No primer is needed for silicate glass, zirconia ceramics, and metal with reliable and durable bonding strength.

### Indications:

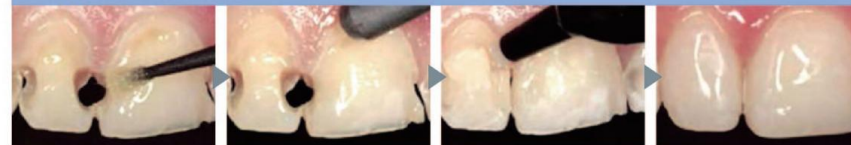
- Dental bonding of direct repair (composite, resin modified glass inomer etc.) and indirect restoration
- Directly bonding to the root canal without any primer

### scope of application



used for direct bonding or indirect bonding to any dental material.

### Application Method



1. Clean, blow dry, apply adhesive.

2. Wait 10 seconds, air blow for 5 seconds, light cure for 20 seconds.

3. Resin repair.

4. Shaping and polishing.

### Advantages:

- Universal adhesive for silicate glass, zirconia ceramics, metal and resin composite
- Simplified operation process with less postoperative sensitivity
- Excellent bonding strength with great adhesion durability
- Light curable single-component dental adhesive
- Low film thickness

### Packaging Specifications:

- Specifications: 5.0ml, Brush: 20pcs



# DX.BOND VII

## Dental Bonding Adhesives



DX.BOND VII, a single light curable component, is a self-etch one-step adhesive. Suitable for self-etching bonding of enamel / dentin.

### Indications:

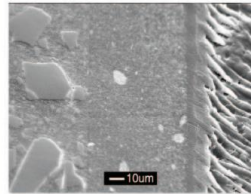
- All classes direct restorations and the indirect restorations of porcelain veneer, crown and inlay/onlay

### Advantages:

- Combining etching and adhesive into one step to improve operation consistence and efficiency
- Unique patented technology serviced for disinfection
- Better dentin tubule penetration with MDP-wet adhesion technology resulting in an increase of the bonding strength and less postoperative sensitivity

### Super penetration

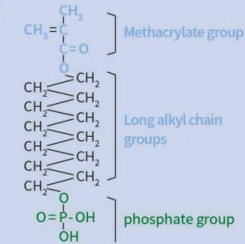
Adhesive can quickly penetrate into the dentinal tubule



SEM photograph of the dentin-adhesive surface

### Long alkyl chain

Phosphate monomer  
High bonding strength



Methacrylate group

Long alkyl chain groups

phosphate group

Methacrylate groups are involved in free radical reactions

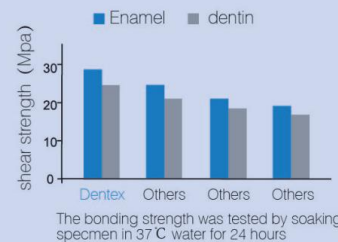
The long alkyl chain can effectively inhibit the hydrolysis reaction and improve the long-term stability of the material

Phosphate groups form strong chemical bonds with inorganic materials in tooth, providing super bonding

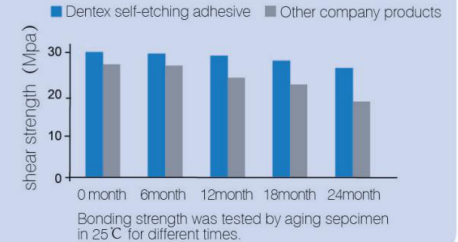
The acidic monomer with long alkyl chain forms chemical bonding with dentin and enamel resulting in a waterproof sealing, better bonding strength, and great durability.

### Long, stable bonding strength

High bonding strength:



Ageing-resistant effect



### Packaging Specifications:

- Specification: 3ml, Brush: 10pcs  
5ml, Brush: 20pcs

# DX.BOND V

Dental Bonding Adhesives



DX.BOND V dental adhesive is a single component for total etch technology. It can be used widely in dental clinic for all direct and indirect restorations. It also works well for enamel with total etching technique.

## Indications:

- Suitable for all classes of cavity restorations and indirect restorations including silicate glass, zirconia ceramic, metal, alloy, BioPAEK® crown bridge, etc.

## Advantages:

- Great stability, compatible with other resins
- Super bonding, durable adhesion performance

---

## Packaging Specifications:

- Specifications: 5ml
- 

## Method:



**1** After cavity preparation and etching, apply dental adhesive (one or two coats)

**2** Wait 10 seconds and blow dry for 5 seconds to remove the solvent

**3** Light cure 20 seconds



20% dental phosphoric etchant containing BAC(benzalkonium chloride) to Inhibits the activity of MMP, protects the tooth collagen fibers and prevent the bonding interface from damage. As a result, it helps better bonding and durability, and also inhibits the breeding of oral bacteria.

DX. Etch is an etching gel containing 37% phosphoric acid. It is used for enamel and dentin etching in conjunction with sealants, composite restorations and the adhesive luting of indirect all-ceramic or composite restorations.

### Indications:

- Suitable for etching of dentin and enamel

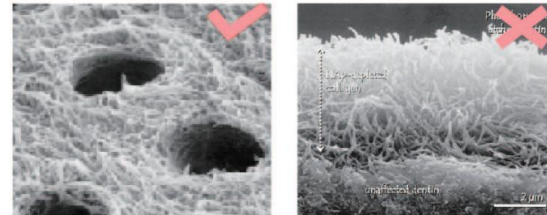
### Advantages:

- Blue gel for easy distinguish.
- NiceThixotropy, easy use, but not flowable
- Easy extrusion without waste
- Easy cleaning, rinsing without residual

### Packaging Specifications:

- Phosphoric acid content: 37%, 20%
- Specification: 2.5ml, 5.0ml, 10ml, 50.0ml
- Colors: light blue (37%), blue (20%)

### Wet Adhesion Techque Recommended



Dentin wet bonding is recommended: After etching, the dentin adhesion surface may be too dry to cause the collagen fiber network to collapse. It may decrease bonding strength

# Porcelain Etch

Etching Gel



Porcelain Etch green gel is coming with 9.5% hydrofluoric acid content. Quickly etchs porcelain to generate coarse surface, and improves the bonding strength between adhesive and porcelain.

## Indications:

- Etching for porcelain crown, porcelain veneers, porcelain inlay and onlay

## Advantages:

- 9.5% hydrofluoric acid
- Green gel, easy to identify
- Good product stability
- Easy to remove and clean without residual

---

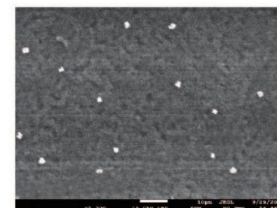
## Packaging Specifications:

- Specification: 2.5ml
  - Tip: 5 pcs
- 

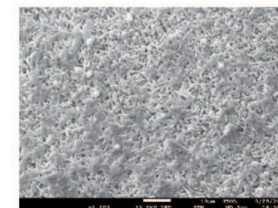
## Attention:

Never use in mouth! Use it by wearing acid-resistant protective gloves, protective clothing and goggles. If accidentally contact the skin, immediately use a lot of water to rinse, serious cases should seek further medical treatment immediately.

## Effect diagram of porcelain etching:



Before



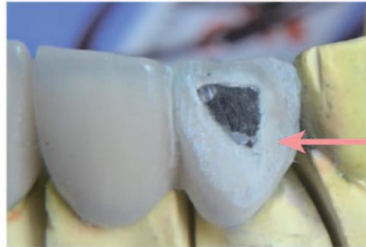
After 30 seconds

## Hydrofluoric acid etching time:

1. Baked porcelain 60 seconds-90 seconds
2. Casting porcelain for 20 seconds-30 seconds

# PC PRIMER

Porcelain Silane Primer



PC PRIMER is a silane coupling agent used for the surface treatment of porcelain during porcelain restorations. It builds a chemical bonding between porcelain surface and adhesive to improve the bonding strength.

## Indications:

- Used for surface treatment of porcelain surface

## Advantages:

- Significant improvement in the bonding strength with porcelain
- Good product stability

## Packaging Specifications:

- Specifications: 5ml

# MZ PRIMER

Metal/Zirconia Primer



MZ PRIMER is a primer used for bonding metal, alloy, alumina and zirconia ceramics. It effectively improves the bonding strength.

## Indications:

- Surface treatment of metals, alloys, alumina and zirconia ceramics

## Advantages:

- Significant improvement in the bonding strength
- Good product stability

## Packaging Specifications:

- Specifications: 5ml

# DEN LINK

## Porcelain Fracture Repair Kit



Porcelain fracture repair kit is a simple repair kit designed for the repair of porcelain and zirconia restorations. It can be used for bonding silicate glass, allumina ceramic, zirconia ceramic, metals and alloys.

### Indications:

- Suitable for all kinds of porcelain teeth and zirconia teeth

### Advantages:

- High bonding strength with primer treatment
- Great aesthetic repair with the masking of flowable opaque composite and combined techniques

---

### Packaging Specifications:

- DX. Flow-Opaque OA2 2g
  - DX. Flow-Low Flow A2 2g
  - DX.Bond V 5ml
  - Porcelain Silane Primer 5ml
  - Metal/Zirconia Primer 5ml
  - Porcelain Etch 2.5ml
  - Brush: 20 pcs
  - Tip: 5pcs(Blue), 10pcs(black)
-

# Veneer/Inlay/Onlay Luting Kit



This kit is specially designed for various types of porcelain veneer and inlay/onlay and also meet different requirements for restoration bonding

## Indications:

- Suitable for color matching and bonding of various types of porcelain veneers and inlays; it can also achieve firm bonding of silicate glass, oxide ceramics (zirconia, alumina), metals and alloys.

## Advantages:

- Porcelain veneer, inlay try-in, color matching, and bonding together with one kit
- Aesthetic restoration of the upper tooth part

## Packaging Specifications:

- Try-in Paste: BB(Clear), A1, A2, A3, OA2 , 5 × 2g
- DX.FLOW Veneer: BB(Clear), A1, A2, A3, OA2 , 5 × 2g
- DX.CORE Dual Cure: 8g
- PC.Porcelain Silane Primer: 5ml
- MZ.Metal/Zirconia Primer: 5ml
- Hydrofluoric Acid Etchant: 2.5ml
- DX.Etch 37% Etchant: 2.5ml
- DX.BOND V : 5ml
- DX.AIR-BLOCK Oxygen Isolation Gel: 2.5ml
- White Brush : 20 pcs
- Purple Brush Holder: 1 pcs
- Tip: Mixed Tips: 5 pcs; Black Tip: 30 pcs; Type 1 Blue Tip: 10 pcs; Type 2 Blue Tip: 5 pcs
- Shading Box: 1

# DX.Flow

Light Curing Dental Composite Resins



## Indications:

- Whitening veneer bonding
- Porcelain restoration
- Other whitening restoration
- Masking discolored tooth

## Advantages:

- Better whitening effect in veneer bonding
- WH and TW with different whiteness and masking ability to meet the dentist's request for different cases
- Good color stability
- Good physical performance and impact resistance
- Low shrinkage

## Packaging Specifications:

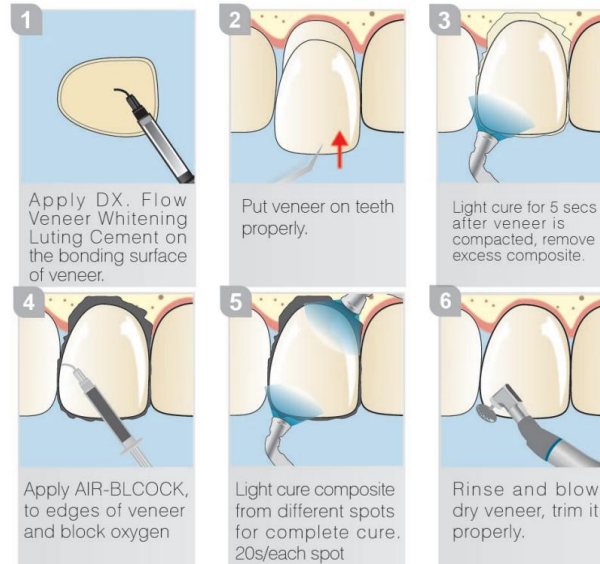
- Specification: 2g, BB(Clear), A1, A2, A3, OA2  
3g,WH (Excellent masking), TW (Medium masking)

## Veneer Luting Cement



In same thickness (0.3mm),  
WH is more opaque than TW.

## Indication







### Advantages:

- High compressive strength and flexural strength
- Dual curing, light curing for 20s, self curing for 5 mins
- DX. Bond V is required after etching if using for DX.CORE for bonding,

### Packaging Specification:

- Specification: 8g
- Shade: A1, A2, A3, A3.5, OA2
- Mixtips: 5 Tips

### Indications:

- Core building-up
- Bonding for crown, bridge, inlay/onlay
- Filling for special deep cavity restoration

### Core build-up operation diagram



1. Root canal filling and preparation



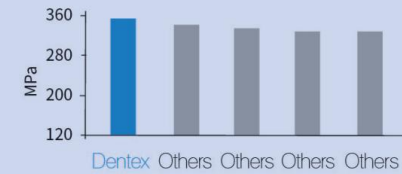
2. Inspect the fiber post and bond it



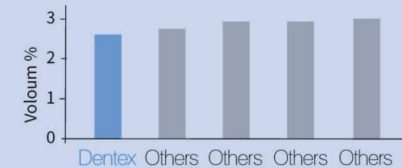
3. Build-up of resin cores and trimming

### Excellent Physical Proper

#### Compressive strength



#### Shrinkage



# DEN CEM I

Dental Cement



DEN CEM I is a self etching, self adhesion, dual cure resin cement with automix syringe. It is suitable for all kinds of permanent cementation of restorations.

## Indication for use:

DEN CEM I is suitable for cementation of crown and bridge which made of PFM or Zirconia. It is a dual syringe

## Advantages:

- Simplified steps. Etching, bonding & cementation completed in one step by applying DEN CEM I .
- Dual cure. Light curing and self curing for easy handling upon case requirement.
- Low solubility. A long restoration and durability.
- Radiopaque. Easy identification on radiographs for diagnosis.
- Fluoride releasing. Effective preventing recurrent caries.

---

**Packaging Specifications:** 8g

---

# DEN CEM II

Dental Cement



DEN CEM II is self etching, self adhesive and dual cure resin cement.

### Indication for use:

DEN CEM II is suitable for cementation of crown and bridge which made of PFM or Zirconia. It is a liquid-powder form.

### Advantages:

- High bonding strength. Compare with glass ionomer cement, DEN CEM II has good bonding strength and flexural strength.

### Physical Property Comparison

RESIN CEMENT	
<b>Compressive Strength</b>	300Mpa
<b>Flexural Strength</b>	60-70Mpa
<b>Bonding Strength</b>	8-12Mpa
<b>Water Solubility</b>	Very Low

- **Economic.** One set can be used to fix at least 100 teeth. It is more economic in comparison with automix design
- **Chemistry Stability.** Liquid and powder are designed to be packed in separate bottles. The chemistry properties are more stable and can be stored in normal room temperature and no need of refrigeration
- **Dual cure.** Light cure and self cure for better choice
- **Low solubility • Radiopaque • Fluoride releasing**

### Packaging Specifications::

Refill      8ml liquid + 15g powder      Universal

# DX. CEM Ionomer

Dental Cement



DX. Ionomer is a self-cured, glass ionomer restorative product featuring high resistance to water. The procedure can be finished in just 15 minutes. It provides a durable restoration.

### Indication for use:

- Lining
- Class I restoration (non occlusion-bearing)
- Long term temporary class I and II restoration

### Advantages:

- Durable fillings
- Good adhesion to dentine and enamel
- Continuous high fluoride release
- Biocompatible

### Physical Property Comparison

GLASS IONOMER	
<b>Compressive Strength</b>	180-200Mpa
<b>Flexural Strength</b>	30-50Mpa
<b>Bonding Strength</b>	6-8Mpa
<b>Water Solubility</b>	Low

### Packaging Specifications:

Refill      8ml liquid +15g powder      Shade: A1,A2,A3

## DX. AIR-BLOCK



DX. AIR-BLOCK (oxygen block) is a colorless and transparent water-soluble paste; Apply it to the composite surface before light curing to block oxygen.

### Indications:

- Apply to shaped composite surface before light cure
- Cover the edge gap during veneer bonding

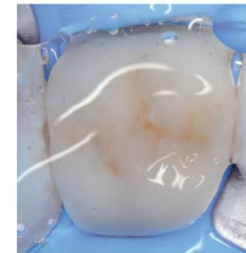
### Advantages:

- Oxygen elimination during composite curing, suitable for various composite repair materials
- Effectively preventing the veneer edges from changing color

---

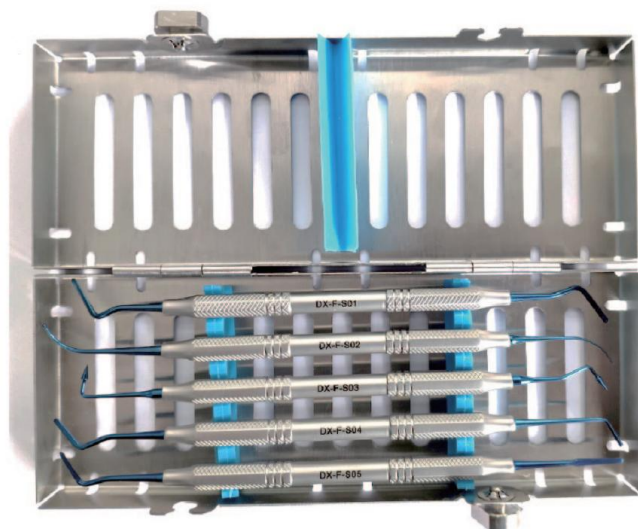
### Packaging Specifications:

- Specification: 2.5ml
  - Tips: 5 pcs
- 



Oxygen inhibition layer: Oxygen prevents the composite surface from complete cure. Cover the composite surface with DX. AIR-BLOCK resulting in good surface curing

# DX. Filling Instrument



Dentex Esthetic Composite Dental Filling Instrument kit, designed for clinical practice with esthetic dental restorative materials. It is made of titanium steel with special coating. Applied with hollow and thick texture handle, the instrument is easy to be handled and has non-slippery feeling. Its special angle design helps perfect molding.

## Packaging Specifications:

- Model: DX-F-S01, DX-F-S02, DX-F-S03, DX-F-S04, DX-F-S05
- Packaging: 5pcs





Three-step polishing method, replace the traditional grinding wheel. Efficient and fast!

This product consists of double Intertwined polishing wheels. It is easy use for variety of applications. It can polish the areas where other wheels could not reach (e.g., occlusal surface). It works well for composites, glass inomer and other materials without changing the original shape and damage to the polished material.



To achieve ideal polishing, use the polish wheels based on following order from coarse to fine. Blue (coarse polished)-brown (moderate polished)- gray (fine polished). One box of wheels can polish about 60-100 teeth.

### Indications:

- Composite restoration polishing and excess part removal
- Implant cleaning up
- Inlay/onlay and crown restorations

### Advantages:

- Excellent versatility for polishing of all dental surfaces
- Zero cutting, great polishing without change the shape of the resin surface
- Efficient, fast and convenient, no polishing paste needed
- Unique mixing technology of diamond sand particles to improve durability
- Use for both technicians and clinicians; work for resin and porcelain

### Packaging Specifications:

- Specifications: 1 box: Blue (Coarse polishing ) 2pcs , Brown (Moderate polishing) 2pcs, Gray (Fine polishing) 2pcs
- Model: 12mm, 14mm
- Packaging: 6pcs

# DX.TEMP

Temporary C&B Resin



Temporary crown bridge resin is a self-curing material for temporary restoration

## Indications:

- Used for a single or multi temporary repairs in clinic
- Used for temporary crown and bridge before permanent restoration
- Inlay/onlay and high-inlay

## Advantages:

- Mild reaction with low heat and without the irritation to the pulp
- High compressive strength and flexural strength, easy to polish. Well sealed edges
- Excellent biocompatibility for a good protection of pulp and gum
- Ideal viscosity for easy application
- Stable color and good color match

## Packaging Specifications:

- Specifications: 75g
- Color: A1, A2, A3, W
- Mix Tips: 10pcs

## Comparison

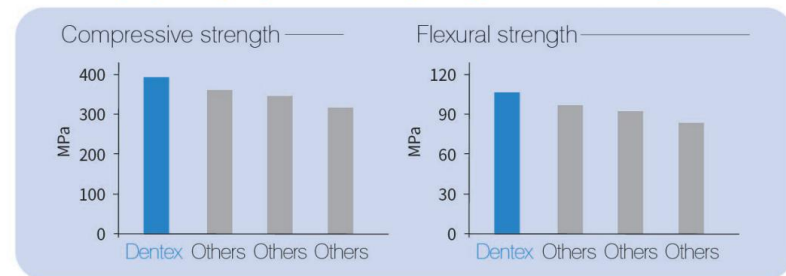


Before application



After temporary repair

## Excellent physical properties of temporary crown and bridge materials





# DX.TEMP CEM

Temporary C&B Cement



DX. Temp Cem is used for the bonding of the temporary crown and bridge, and has no irritation to the gums.

#### Indications:

- Used for the bonding of temporary crowns, bridges, inlay/onlay, and high-inlay

#### Advantages:

- No eugenol, no impact to polymerization of resin materials
- Have good adhesive strength and edge sealing
- Easy to remove and clean without residuals

---

**Packaging Specifications:** Base: 60g Catalyst: 40g

---

# DX.TEMP-LC

Temporary Light Cure Composite



DX.TEMP temporary light cure composite has excellent sealing performance. It does not need to be trimmed after applying and cure. This cured composite has great elasticity for easy removal.

## Indications:

- Temporary filling for all class cavities
- Implant screw sealing
- Temporary filling the cavity for inlay/onlay or root canal treatments

## Advantages:

- Easy to close up the cavity with this product following by light cure
- Easy to shape, and clean up
- Ideal viscosity
- Suitable elasticity for easy removal
- Two colors (transparent, blue)

## Packaging Specifications:

- Specifications: 2.5g
- Shade: Transparent, Blue
- Packaging: 1 Syringe, Tip: 5 pcs (1 Syringe Pack)  
3 Syringes, Tip: 10 pcs (3 Syringes Pack)

## Operation Procedure



1. Prepare the cavity



2. Apply DX.TEMP



3. Light cure 20 seconds



4. Remove DX.TEMP with a right instrument



DX. Seal pit and fissure sealant is a light-curing resin-based self-adhesive and used after acid etching. It can release fluoride ion to prevent enamel from caries.



1. Clean the tooth surface, etch for 30 seconds by phosphoric acid, then rinse
2. Apply DX. Seal to fit and fissure
3. Light cure for 20 seconds
4. Polishing

### Indications:

- Seal the pits and fissures on the tooth surface to prevent dental caries

### Advantages:

- Fluoride release, oral pathogenic bacteria inhibition, and anti-caries
- Inorganic filler content with higher abrasion resistance and lower shrink in comparison with competitors' product
- Excellent edge sealing, reducing microleakage

### Packaging Specifications:

- Specifications: 2.5g
- Color: white, blue, pink

## DX. Seal Pit & Fissure Sealant Kit

### Packaging Specifications:

- DX. Seal 3 x 2.5g(White, blue and pink)
- DX. Etch 37(Special for pit and fissure sealing): 10ml
- Tip: 14 pcs



Using DX. Etch 37(Special for sealing of pits&fissures )is more efficient for pit and fissures.

# Fluoride Varnish



Fluoride Varnish contains tricalcium phosphate (TCP) and sodium fluoride, providing protective coating to prevent dental caries.

## Indications:

- Fluoride coating to increase the acid resistance of enamel and prevent dental caries

## Advantages:

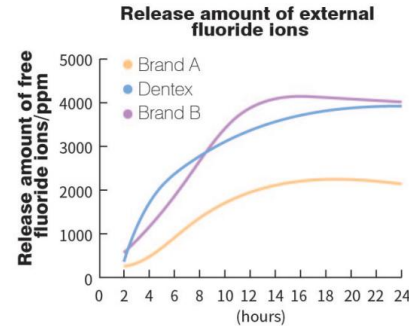
- Good flowability to penetrate and cover the tiny cracks of the tooth.
- Fast film formation and fluoride adsorbing on the tooth surface easily.
- Continuous releasing fluoride ions and inhibiting cariogenic bacteria metabolism after activation
- Caries prevention for people of all ages
- Three flavors

## Precautions

- The patient is allowed to have liquid diet within 2 hours after application, however, tooth brushing is not suggested within 4-6 hours
- Alcoholic beverages and mouth washer are not allowed due to its solubility to fluoride varnish
- Avoid using other fluoride such as fluoride gel within 24 hours; fluoride tablets should be avoided within 48-72 hours after treatment

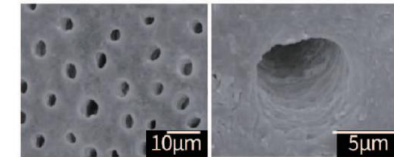
## Packaging Specifications:

- Specification: 0.4ml
- Packaging: 50 Bags
- Flavor: Mint, Strawberry, Cantaloupe

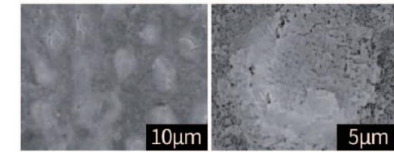


Continuously and consistently releases fluoride ions for resulting in long tooth protection

## SEM before and after fluoride coating:



Before fluoride coating, the tubules is opened



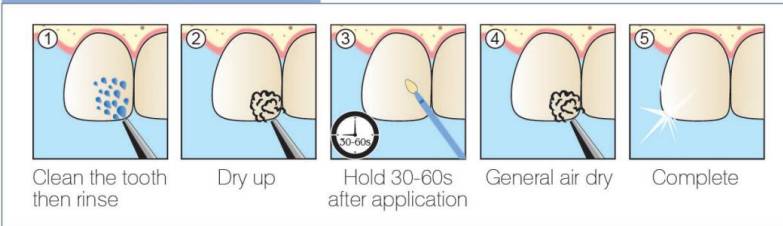
After fluorine coating, the tubules are filled

## Reference for frequency of use of fluoride protector

Risk group	Starting age	Frequency of fluoride coating
General group (low-risk group)	According to the preference of infants, Start from the eruption of deciduous teeth	Every 6 months
Caries susceptible group (high-risk group)		Every 3 months

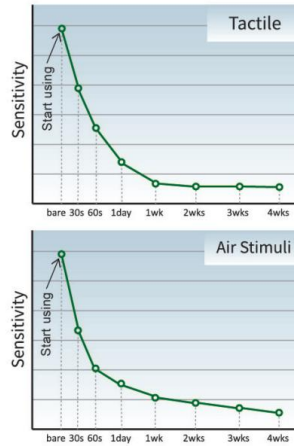
Guidelines for Fluoride Use published in "PEDIATRICS", August 25, 2014, a Journal of the American Academy of Pediatrics (AAP)

## Fluoride Coating Process



# DENSHIELD

## Dental Desensitizer



Reduce Sensitivity

DENSHIELD Desensitizer has dual desensitization functions. After the desensitizer infiltrating into the dentin tubules, the irritation of the dental pulp nerve is quickly relieved and inhibited. The formed crystals block the dentin tubules, play a rapid and long-term desensitization role.

### Indications:

- Relieve the symptoms of tooth sensitivity caused by dentin exposure

### Advantages:

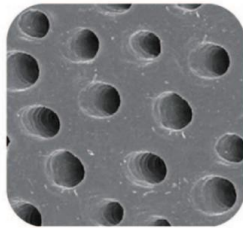
- Rapid inhibition of pulpal nerve irritation response - quick effect
- Calcium oxalate crystals formed in dentin tubules through the chelation of potassium oxalate to block dentin tubules for a long time. These crystals has stable physiological conditions
- No irritating, no tooth discoloration
- No impact to following treatments and sealing

**Packaging Specifications:** 5ml

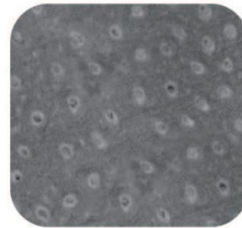
### Comparison before and after desensitization of dentin tubules



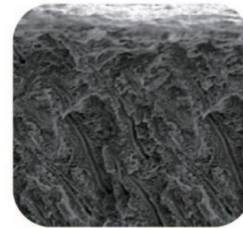
Enlarged sectional view of dentin tubules before treatment



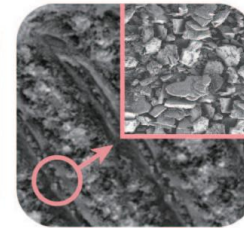
Enlarged view of dentin tubule surface before treatment



Tooth surface after treatment



Lateral section of teeth after treatment



Dentin tubule crystallization after treatment

# ORTHOBOND

Dental Bonding Adhesives



Green & Clear Kit

ORTHOBOND is divided into two components: Paste and Primer. It is a new generation light curable orthodontic adhesive.

## Indications:

- ORTHOBOND Paste (Clear & Green): Suitable for bonding of ceramic, metal, and invisible orthodontic accessory
- ORTHOBOND Primer: Suitable for bonding of ORTHOBOND Paste to tooth

## Advantages:

- Ideal viscosity with no bracket shifting
- Color changing green paste: temperature indication with color change for easy observation and cleaning up

## Packaging Specifications:

- Paste: 4g
- Liquid Agent: 3ml, 6ml
- Color: Green, Clear

## Kit Packaging Specifications:

Green, Clear orthodontic adhesives (Standard Kit)

- Paste: 3 × 4.0g
- Primer: 6.0ml
- 37% etching agent: 5.0ml

Green, Clear orthodontic adhesive (Introduction Kit)

- Paste: 4.0g
- Primer: 3.0ml
- 37% etching agent: 2.5ml



Green color paste below 32°C



Changed to transparent above 32°C

# ORTHOBOND Blue

Dental Bonding Adhesives

## Advantages:

- Ideal viscosity without bracket shifting
- Blue Paste: No need for orthodontic adhesive when used in open occlusion

## Packaging Specifications:

- Paste: 4g
- Color: Blue

## Kit specification

### ORTHOBOND Light Cure Orthodontic Adhesive Intro Kit (Blue)

- ORTHOBOND Paste: 4.0g
- 37%Phosphoric Acid Etchant: 2.5ml

### ORTHOBOND Light Cure Orthodontic Adhesive Standard Kit (Blue)

- ORTHOBOND Paste: 3 x 4.0g
- 37%Phosphoric Acid Etchant: 5ml



Blue Kit

## Indications:

- ORTHOBOND (Blue): Suitable for opening occlusal and orthodontic band bonding, Blue paste for easy removal and cleaning up



Open Occlusion



Orthodontic Band

# ROOT CANAL GEL

EDTA Lubrication



ROOT CANAL GEL consists of sodium ethylene diamine tetracetate(EDTA), and polyethylene glyco. It has following features: Neutral pH, quickly softening the root canal wall, and easy to remove debris. It is convenient for the root canal preparation

- Super dispersion and penetration performance
- Efficient unplugging calcified root canal
- Fast root canal expansion, short the preparation time
- Neutral pH, less irritation

## Indications:

- Lubrication during root canal preparation, and assisting device to expand the root canal

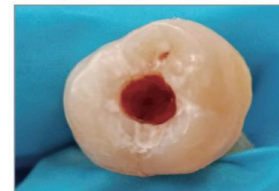
## Advantages:

- Ideal viscosity and nice wetting with strong demineralization
- Suitable for calcified root canal treatment with difficult shape
- Sterilization and micro-foaming function which helps remove the debris in the root canal
- Neutral pH value, less irritation

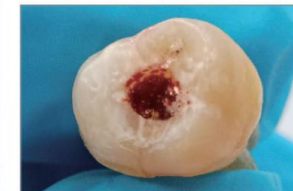
## Packaging Specifications:

- Specification: 1×3g, 2×3g

## Comparison



Before application

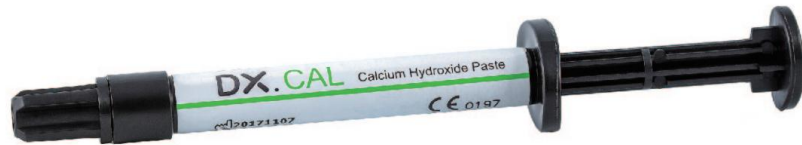


After application



# DX.CAL

Calcium Hydroxide Paste



### Indication for use:

- Indirect pulp capping.
- Temporary root canal treatment.
- Pulp curettage and pulpotomy.
- Radiopaque.

### Advantages:

- Excellent antimicrobial effect  $\text{PH} > 12$ .
- High water solubility, easy to be cleaned and removed.
- Ready to use.

---

**Packaging Specifications:** 2g

---

# DX.CAL-LC

Light Cure Calcium Hydroxide Base/Liner



### Indication for use:

- Apply to dentin as a protective liner from restorative materials.
- Indirect pulp capping.

### Advantages:

- Light cure and easy to use.
- Radiopaque.
- Good physical properties.
- Low solubility to water.
- Good protection for pulp.

---

**Packaging Specifications:** 1.5g

---

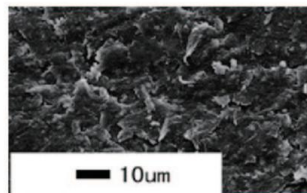
# BioPAEK® CAD/CAM Milling Blank

PEEK Dental Milling Blank

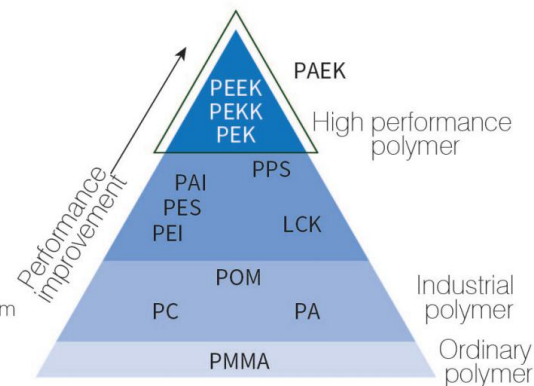


Dentex BioPAEK® Dental Polyetheretherketone crown and bridge material is a sole product with CFDA registration certificate for dental Polyetheretherketone product in CAD/CAM process.

BioPAEK is particularly well suited for producing high quality prosthetic restorations. Its density and elastic modulus are close to human bone. It also has an excellent biocompatibility and great chemical resistance. Its denture appears nature, strong, and flexible. No dental plaque is formed.



SEM at 2000x magnification. It shows uniform texture and delicate surface of BioPAEK®



## Comparison of BioPAEK® with the other materials:

Material	BioPAEK®	PEEK	PMMA	Ti	Zr
Density	1.4g/cm <sup>3</sup>	1.3/cm <sup>3</sup>	1.18/cm <sup>3</sup>	4.5/cm <sup>3</sup>	6.5/cm <sup>3</sup>
Vickers Hardness	30HV	20HV	18HV	300-400HV	1,200HV
Flexural Strength	190-210MPa	165-170MPa	95-105MPa	—————	800-1,400MPa
Elastic Module	4,200-4,800MPa (2,000-12,000MPa for human jaw)	3,600MPa	3,600MPa	115,000MPa Too Hard	205,000MPa Too Hard
Water Absorption	< 6.5µg/ mm <sup>3</sup>	5µg/ mm <sup>3</sup>	19µg/ mm <sup>3</sup>	—————	—————
Bonding Strength	>38Mpa	22Mpa	—————	>20Mpa	>18Mpa
Surface Polishing	>0.02µm Very Good	Bad	>0.05µm Good	Bad	Good
Heat Conductivity	Low	Low	Low	High	Low

## Excellent advantages of BioPAEK®

### Great Chemical Resistance! Safe and Reliable

Stable under acid and base condition except strong acid. Biocompatible proved by Cytotoxicity, Hypersensitivity, Irritation/intracutaneous reactivity, Genotoxicity, and Systemic toxicity tests.

### Mechanical properties, great combination of elasticity and rigidity

Traditional metal and zirconia materials are strong but rigid in comparison with BioPAEK. The E-modulus of BioPAEK® lies in the range of 4000 MPa, which is very close to human bone. So, chewing or impact forces with BioPAEK® is reduced due to BioPAEK® cushion function especially for implant-supported bridges. The elastic modulus of BioPAEK® is equivalent to human jaw, the restoration with BioPAEK® plays a role as a "shock absorption". Therefore, BioPAEK® is suitable for the upper part restoration of the implant.

### Appropriate density and excellent flexural strength

The density of BioPAEK® is similar to that of human tooth, however, lower than that of metal or zirconia by 3~4 folds. It is light and comfortable to wear without foreign body feeling. It was found BioPAEK® has low modulus and great flexural strength to effectively reduce fracture.

### Easy processing and fault tolerance

So far, it is a sole product with CFDA registration certificate for dental Polyetheretherketone product in CAD/CAM process. BioPAEK® can withstand large shape variables and can be slightly adjusted during product processing and clinical use, and provide an opportunity for fault tolerance and remedy.

## Other Properties

### •Anti-Plaque

Low water absorption and uniform surface could reduce plaque aggregation.

### •Comfortable To Wear

The product is lighter and more acceptable than rigid materials.

### •Non-metal

There is no ion precipitation. It does not affect CT detection.

### •Easy Processing

One time CAD / CAM process

### •Good For Gums

In comparison with Titanium, animal tests showed that the amount of gingiva edge bleeding was significantly reduced by using BioPAEK®.

### •Fault Tolerance

It can withstand large shape variables, and is not easy to crack during processing. The dentist has a great flexibility to adjust his application during the restoration.

## 【Scope of application】 Off-site repair: Support, base and etc

### Performance of BioPAEK® compared with traditional dental materials

Dentex BioPAEK®	Metal materials
Good biocompatibility, and no metal allergy	Chance to metal allergy.
X-ray transparent, and no artifact image during CT examination	X-ray resistance, and possible artifacts image during CT image examination
Good flexibility and less chance to fracture	High hardness and rigidity, a possible cause for the break of cast snap ring
High aesthetics, light weight and great comfortability	Poor aesthetics, heavy weight and less comfortability

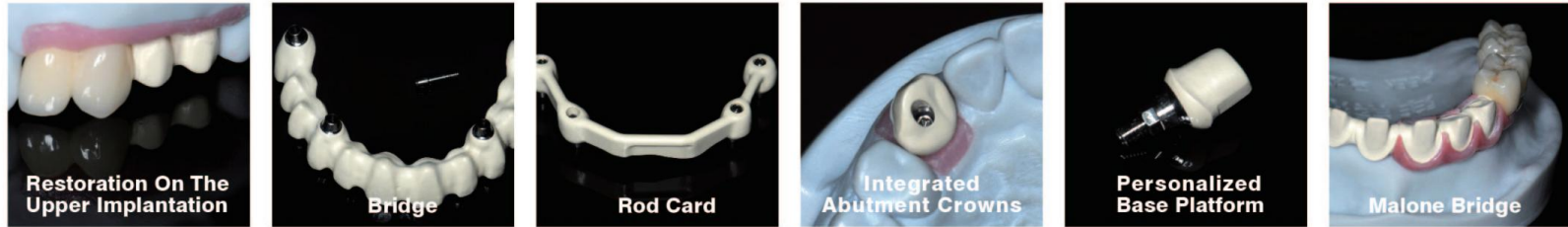


### Advantages of BioPAEK®

Health, beauty, comfort, good anti-aging performance. Only non-metallic material for a permanent solution!

**Implant restoration: personalized base, pole card, Malone bridge, bridge, implant upper restoration and etc**

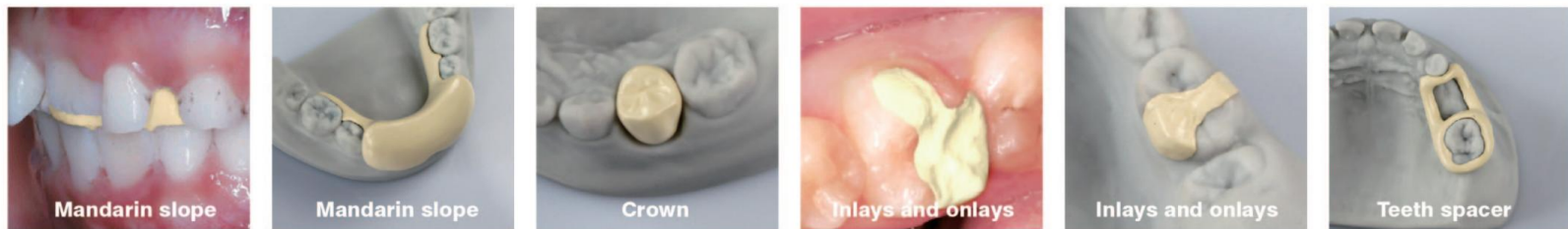
Performance of BioPAEK® compared with traditional dental materials	
Dentex BioPAEK®	Metal and zirconium materials
Great biological properties, excellent tensile strength with reducing impact force	Strong, rigid, high hardness, strong impact force
Light, less foreign body feeling and great comfortability	Heavy, bad foreign body feeling and poor comfortability



**Advantages of BioPAEK®** Light weight, Reduce direct occlusion impact force, Extend implants lifetime

**Restoration of primary teeth of children: inlay, crown, spacer, personalized spacer**

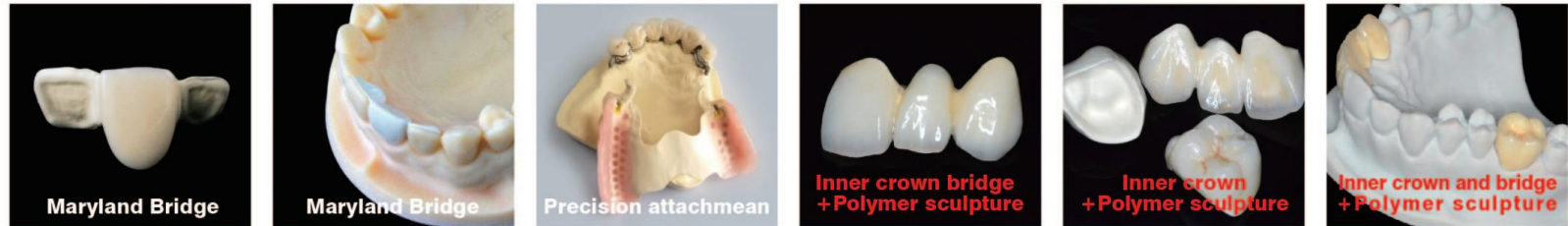
Performance of BioPAEK® compared with traditional dental materials	
Dentex BioPAEK®	Metal and zirconium materials
Good appearance, great biocompatibility and no allergy	Poor aesthetics, possible allergy and gingiva blackening
Good edge closing up	Ease edge collapse, Poor edge closing up
Natural tooth strength, less wear to natural tooth	Opposite nature tooth wearing concerns caused by hard metal and zirconia materials



**Advantages of BioPAEK®** Comfortable and beautiful! Protection for the health and safety of natural tooth!

**Restoration: inlay, onlay, internal crown, internal crown bridge, full crown, full crown bridge, Maryland bridge, bonding bridge and bridge. Fixed movable restoration: precision attachment, sleeve crown and etc**

Dentex BioPAEK® Material advantages	
Excellent biocompatibility, no metal color, no allergy, no dental plaque	Not abrasion to the opposite nature teeth and remaining teeth
Excellent elastic modulus, it can effectively cushion and reduce the impact from occlusion	Easy to operate and excellent polishability
Excellent wear resistance, fracture resistance and anti-aging performance	Easy to clean with general disinfection methods
Great mechanical properties and durability	Great tensile strength to meet the requirements of clinical application



**Packaging Specification**

Round Block Sizes(mm)	Depth(mm)	Shade
φ98	10,12,14,16,18,20,22,25	Yellow, Pink, White

Square Block Sizes(mm)	Depth(mm)	Shade
140×150	16,18,20,22,25	Yellow, White

Diagram of round block

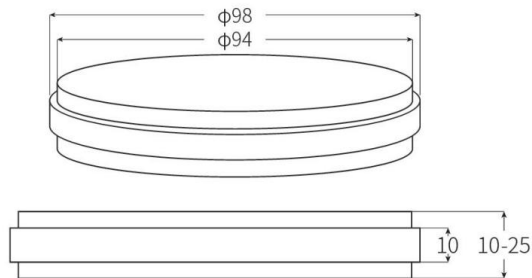
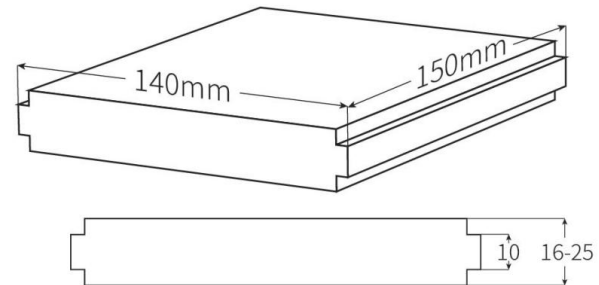


Diagram of square block



# DENCOVER

Light Cure Liquid Polish



Dentex light cure liquid polish can form a smooth and glazed surface on the resin restorations after light curing, it reduces discoloration of resin restorations.

## Indications:

- Direct, indirect and temporary resin restorations, and enamel surface treatment after orthodontic bracket bonding

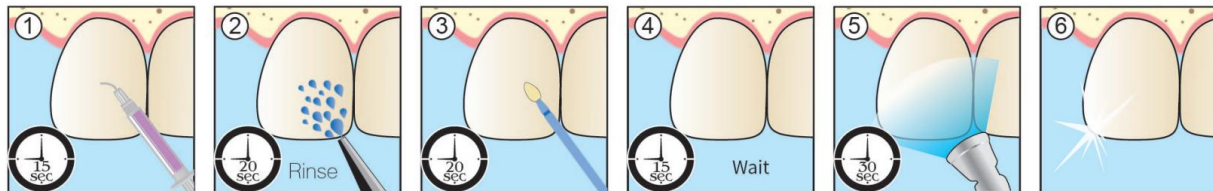
## Advantages:

- Increasing in brightness of resin surface and improving the restoration effect
- Reducing discoloration of resin restoration
- Use for direct and indirect restoration

## Packaging Specifications:

- Specification: 3ml
- Brushes: 20 pcs

## Instruction for use:



1. Apply dental phosphoric acid etchant and hold for 15s

2. Rinse for 10-20s

3. Apply DENCOVER from one direction for 20s

4. Hold for 15s until the solvent volatilizes, no need to blow dry

5. Light cure for 30s from distance less than 2mm

6. Complete

# Denture Adhesive Cream

Denture Adhesive Cream

## Best Solution For Denture Issues

Zero Worry! Stable! Comfortable! Easy!



Our denture adhesive cream is mainly composed of carboxymethyl cellulose sodium, vinyl methyl ether and maleic anhydride linear copolymer P(VMMA) salt and other materials.

### Indications:

- Suitable for temporary retention of removable dentures
- Recommended usage: Apply once a day before wearing

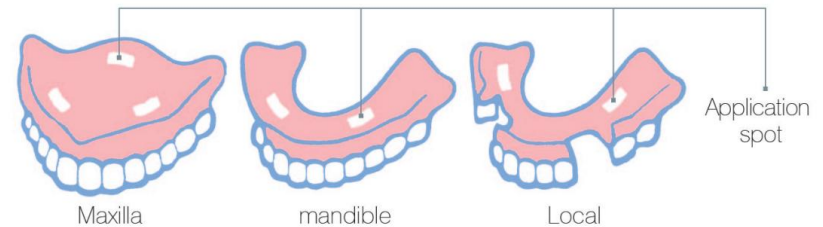
### Advantages:

- High quality raw materials, not irritation to oral mucosa and sensitization
- Stable denture, durable and firm without looseness, improving masticatory function
- Preventing bacteria from breeding and reducing the incidence of periodontal disease, ulcer and oral mucosal disease

### Packaging Specifications:

- Specification: 40g

### Diagram of Application Position



### Instruction For Use:

1. Clean the denture and remove excess water
2. As shown in above diagram, squeeze cream onto the denture base and avoid the edge of the denture
3. Cap the tube after use. Put the denture into the mouth, bite 2-3 times to ensure cream spreading well. After a good fitting, then take food normally
4. After use, apply water and take a soft toothbrush to clean the residual cream in the mouth and on denture



---

**DENTEX CO., LTD.**

ADDRESS: No.721, Chenggong Road, High-Tech  
Development District, Changchun, 130000  
Jilin, P.R. China

TEL: 86-431-87807357 FAX: 86-431-87855157

[www.dentexmd.com](http://www.dentexmd.com)

---



**Professional Dental  
Restorative Material Manufacturer**

---